

AGENDA
SAN ELIJO JOINT POWERS AUTHORITY
TUESDAY NOVEMBER 12, 2013 AT 9:00 AM
SAN ELIJO WATER RECLAMATION FACILITY – CONFERENCE ROOM
2695 MANCHESTER AVENUE
CARDIFF BY THE SEA, CALIFORNIA

1. CALL TO ORDER
2. ROLL CALL
3. PLEDGE OF ALLEGIANCE
4. ORAL COMMUNICATIONS (NON-ACTION ITEM)
5. PRESENTATION OF AWARDS
None
6. * **CONSENT CALENDAR**
7. * APPROVAL OF MINUTES FOR THE OCTOBER 14, 2013 MEETING
8. * APPROVAL FOR PAYMENT OF WARRANTS AND MONTHLY INVESTMENT REPORTS
9. * SAN ELIJO WATER RECLAMATION FACILITY TREATED EFFLUENT FLOWS – MONTHLY REPORT
10. * SAN ELIJO JOINT POWERS AUTHORITY RECYCLED WATER PROGRAM – MONTHLY REPORT
11. * REVISED RULES AND REGULATIONS FOR RECYCLED WATER SERVICE
12. * ITEMS REMOVED FROM CONSENT CALENDAR

Items on the Consent Calendar are routine matters and there will be no discussion unless an item is removed from the Consent Calendar. Items removed by a "Request to Speak" form from the public will be handled immediately following adoption of the Consent Calendar. Items removed by a Board Member will be handled as directed by the Board.

REGULAR AGENDA

13. **ACCEPTANCE OF COMPLETION – CONSTRUCTION OF THE ADVANCED WATER TREATMENT PROJECT FOR THE SAN ELIJO WATER RECLAMATION FACILITY**

It is recommended that the Board of Directors:

1. Authorize the General Manager to sign and record a Notice of Completion for the Advanced Water Treatment Project and W. M. Lyles Co.; and
2. Discuss and take action as appropriate.

14. **GENERAL MANAGER'S REPORT**

Informational report by the General Manager on items not requiring Board action.

15. **GENERAL COUNSEL'S REPORT**

Informational report by the General Counsel on items not requiring Board action.

16. **BOARD MEMBER COMMENTS**

This item is placed on the agenda to allow individual Board Members to briefly convey information to the Board or public, or to request staff to place a matter on a future agenda and/or report back on any matter. There is no discussion or action taken on comments by Board Members.

17. **CLOSED SESSION**

None

A closed session may be held at any time during this meeting of the San Elijo Joint Powers Authority for the purposes of discussing potential or pending litigation or other appropriate matters pursuant to the "Ralph M. Brown Act".

18. **ADJOURNMENT**

The next regularly scheduled San Elijo Joint Powers Authority Board Meeting will be Monday, December 9, 2013 at 9:00 a.m.

NOTICE:

The San Elijo Joint Powers Authority's open and public meetings meet the protections and prohibitions contained in Section 202 of the Americans With Disabilities Act of 1990 (42 U.S.C Section 12132), and the federal rules and regulations adopted in implementation thereof. Any person with a disability who requires a modification or accommodation, including auxiliary aids or services, in order to participate in a public meeting of the SEJPA Board of Directors may request such modification or accommodation from Michael T. Thornton, General Manager, (760) 753-6203 ext. 72.

The agenda package and materials related to an agenda item submitted after the packet's distribution to the Board is available for public review in the lobby of the SEJPA Administrative Office during normal business hours. Agendas and minutes are available at www.sejpa.org. The SEJPA Board meetings are held on the second Monday of the month, except August.

AFFIDAVIT OF POSTING

I, Michael T. Thornton, Secretary of the San Elijo Joint Powers Authority, hereby certify that I posted, or have caused to be posted, a copy of the foregoing agenda in the following locations:

San Elijo Water Reclamation Facility, 2695 Manchester Avenue, Cardiff, California
City of Encinitas, 505 South Vulcan Avenue, Encinitas, California
City of Solana Beach, 635 South Highway 101, Solana Beach, California

The notice was posted at least 72 hours prior to the meeting, in accordance with Government Code Section 54954.2(a).

Date: November 6, 2013

A handwritten signature in black ink, appearing to read 'M. Thornton', written over a horizontal line.

Michael T. Thornton, P.E.
Secretary / General Manager

SAN ELIJO JOINT POWERS AUTHORITY
MINUTES OF THE BOARD MEETING
HELD ON OCTOBER 14, 2013
AT THE
SAN ELIJO WATER RECLAMATION FACILITY

Thomas M. Campbell, Chair

Mark Muir, Vice Chair

A Meeting of the Board of Directors of the San Elijo Joint Powers Authority (SEJPA) was held Monday, October 14, 2013, at 9:00 a.m., at the San Elijo Water Reclamation Facility at 2695 Manchester Avenue, Cardiff by the Sea, California.

1. CALL TO ORDER

Chair Campbell called the meeting to order at 9:00 a.m.

2. ROLL CALL

Directors Present:

Teresa Barth
Mark Muir
Thomas M. Campbell

Directors Absent:

David Zito

Others Present:

General Manager
Director of Operations
Director of Finance & Administration
Administrative Assistant
Accounting Technician
Safety/HR Administrator
Laboratory Analyst II

Michael Thornton
Christopher Trees
Paul Kinkel
Jennifer Basco
Carrie Cook
Marisa Buckles
Susana Arredondo

SEJPA Counsel:

Procopio, Cory, Hargreaves & Savitch

Greg Moser

City of Encinitas,
Public Works Management Analyst
IT Operations Supervisor

Bill Wilson
Matias Labarrere

City of Solana Beach,
Director of Engineering/Public Works

Mohammad "Mo" Sammak

Olivenhain Municipal Water District,
Consulting Engineer

Don MacFarlane, P.E.

San Dieguito Water District,
Assistant General Manager

Bill O'Donnell

Saint Francis Court Homeowner Association

Al Evans

Trussell Technologies, Inc.

Shane Trussell, Ph.D., P.E.

3. PLEDGE OF ALLEGIANCE

General Manager Thornton led the Pledge of Allegiance.

4. ORAL COMMUNICATIONS

None

5. PRESENTATION OF AWARDS

The General Manager recognized Susana Arredondo, Laboratory Analyst II, for 5 years of service. On the behalf of the Board, Chair Campbell thanked Ms. Arredondo for her service to the agency and wished her continued success.

6. CONSENT CALENDAR

Moved by Vice Chair Muir and seconded by Board Member Barth to approve the Consent Calendar.

Motion carried with the following vote of approval:

AYES: Barth, Campbell, and Muir
NOES: None
ABSENT: Zito
ABSTAIN: None

Consent Calendar:

Agenda Item No. 7	Approval of Minutes for the September 9, 2013 meeting
Agenda Item No. 8	Approval for Payment of Warrants and Monthly Investment Report
Agenda Item No. 9	San Elijo Water Reclamation Facility Treated Effluent Flows – Monthly Report
Agenda Item No. 10	San Elijo Joint Powers Authority Recycled Water Program – Monthly Report
Agenda Item No. 11	Professional Services Contract Amendment for As-Needed Staff Extension Resources

12. ITEMS REMOVED FROM CONSENT CALENDAR

None

13. AGENCY RESOURCE SHARING AGREEMENT – IT SERVICES

General Manager Thornton reported to the Board of Directors that the agency actively seeks opportunities to collaborate and share resources with neighboring agencies to reduce costs, improve service, and for emergency response assistance. Through the leadership and support of the Board, the SEJPA has achieved success on several projects using this approach. The General Manager stated that staff has identified another opportunity where resource sharing appears to be the best solution. Earlier this year, the agency suffered a computer server failure. This experience led to a detailed review of the SEJPA's Information Technology (IT) system. The review concluded that software and hardware upgrades were recommended, the agency's internet security needed to be heightened, that internet bandwidth was at capacity and that it should be increased to keep pace with information needs, and that the repaired server should be replaced. The General Manager reported that after researching various options for completing this work and for receiving ongoing IT support, the most desirable option identified was to partner with the City of Encinitas. The City has a fully staffed, highly trained, IT department that is interested in providing IT support to the SEJPA. Furthermore, the City has its own IT server that has offsite backup and fiber optic internet service that can be provided to the SEJPA. Therefore, the IT solution provided by the City would include an IT server for the SEJPA's administration functions, internet service, voice over internet protocol phone service, and IT support. The IT support agreement, which is currently being developed, is anticipated to be for two years with renewable options and allowance for early termination by either party. The annual cost for IT support is being discussed at approximately \$24,000 per year and that anticipated equipment, software, and other related IT costs are projected to cost approximately \$43,800.

Moved by Vice Chair Muir and seconded by Board Member Barth to:

1. Authorize the General Manager to enter into an agreement with the City of Encinitas for an IT Services Agreement in the amount of \$24,000 per year; and
2. Authorize the General Manager to purchase IT and related equipment as recommended by the City of Encinitas not to exceed \$43,800.

Motion carried with the following vote of approval:

AYES: Barth, Campbell, and Muir
NOES: None
ABSENT: Zito
ABSTAIN: None

14. FINANCIAL SUPPORT FOR DIRECT POTABLE REUSE INITIATIVE

General Manager Thornton briefed the Board of Directors on potable reuse of recycled water including differences between Indirect Potable Reuse (IPR) and Direct Potable Reuse (DPR). The General Manager highlighted the importance of exploring the feasibility of DPR, which can greatly improve the cost effectiveness and regional availability of potable reuse. The General Manager stated that the WaterReuse Research Foundation is embarking on a multi-year research effort to develop and provide relevant scientific and technical data to the California Department of Public

Health for development of DPR regulatory criteria. This effort also includes developing public information on DPR and outreach tools for engaging the public. More than 30 public agencies from throughout the state have committed to contribute to this effort.

Dr. Shane Trussell of Trussell Technologies addressed the Board and explained the value of DPR and the needed research to determine appropriate treatment standards and to identify the necessary equipment to achieve these standards. Dr. Trussell stated that this DPR initiative is the leadership that is needed to make DPR viable, help educate people on water treatment technology and its reliability, and to assess what, if any, additional areas of research are needed to establish uniform water recycling criteria for DPR.

Moved by Board Member Barth and seconded by Vice Chair Muir to:

1. Authorize the General Manager to budget \$15,000 in FY 2014-15 for the WateReuse Research Foundation's Direct Potable Reuse Initiative; and
2. Authorize the General Manager to sign a Commitment Letter to the WateReuse Research Foundation's Direct Potable Reuse Initiative for \$15,000.

Motion carried with the following vote of approval:

AYES: Barth, Campbell, and Muir
NOES: None
ABSENT: Zito
ABSTAIN: None

15. UPDATE ON SAN ELIJO JOINT POWERS AUTHORITY (SEJPA) RECYCLED WATER PROGRAM AND PROPOSED WHOLESALE AGREEMENT AMENDMENTS

General Manager Thornton gave a brief review of the history of the SEJPA recycled water program. He stated that the SEJPA has been contacted by the Santa Fe Irrigation District (SFID) and the Olivenhain Municipal Water District (OMWD) for securing additional recycled water supply. Both SFID and OMWD are interested in amending or restating their existing agreement with the SEJPA to secure larger quantities of recycled water in future years. In addition, both purveyors have expressed interest in extending the term of their agreement (set to expire between 2016 and 2020), and for using cost of service principles for developing future prices of recycled water. Also, the General Manager reported that the SEJPA and the San Dieguito Water District (SDWD) have been in discussions to amend their recycled water wholesale agreement. The General Manager provided draft wholesale agreement amendments to the Board, as part of the staff report, as well as letters of intent to increase recycled water deliveries to SFID and OMWD. The General Manager reviewed the proposed pricing structure for recycled water wholesaled to the water purveyors for fiscal years 2014 and 2015. He stated that the intent of this staff report is to provide the Board a briefing on the direction staff is taking for increasing recycled water sales and for converging the various wholesale prices of recycled water into one common rate for the same level of service. He stated that the proposed pricing structure for 2014 and 2015 had been presented to the staff of the recycled water purveyors and, it was the goal of staff to provide all parties an opportunity to further refine the amendments before a final amendment is presented for adoption consideration.

The SEJPA legal counsel stated that the General Manager has legal authority to negotiate agreements and, therefore, no action is required by the Board.

16. GENERAL MANAGER'S REPORT

General Manager Thornton reported that the SEJPA is a member of the Integrated Regional Water Management (IRWM) planning process for the San Diego region. Recently, the Department of Water Resources (DWR), which is the managing agency of Proposition 84 grant funding for IRWM projects, provided draft recommendations for Round 2 grant funding. For Round 2, the San Diego region was seeking approximately \$10 million in grant funding for a suite of projects. However, the DWR's draft recommendation was for only 50% of the grant request. The SEJPA, along with many other agencies including OMWD and SFID, have written letters requesting reconsideration of the scoring of the San Diego regional application. The SEJPA, as part of the North San Diego Regional Recycled Water Project, has a grant application in Round 2 that could be impacted by these draft recommendations.

17. GENERAL COUNSEL'S REPORT

Greg Moser updated the Board Members on the status of several pieces of water legislation, SB 322, AB 803, and AB1090, all of which take effect on January 1, 2014. SB 322 directs the Department of Public Health, in consultation with the State Water Resources Control Board, to investigate the feasibility of developing uniform water recycling criteria for direct potable reuse by September 2016. AB 803 makes several changes to existing law that will allow for the increased use of recycled water by modifying definitions and procedures in the Department of Public Health's (DPH) regulations regarding recycled water. AB 1090 authorizes the Fair Political Practices Commission (FPPC) to investigate or initiate an administrative or civil action (including significant fines) against an officer or other person for violation of Government Code section 1090. Government Code section 1090 prohibits public officials and employees from having financial interests in any contract made by them in their official capacity, or by any body or board of which they are members.

18. BOARD MEMBER COMMENTS

None

19. CLOSED SESSION

None

20. ADJOURNMENT

The meeting adjourned at 9:50 a.m. The next Board of Directors meeting will be held on November 12, 2013.

Respectfully submitted,

A handwritten signature in black ink, appearing to read 'M. Thornton', written over a horizontal line.

Michael T. Thornton, P.E.
General Manager

SAN ELIJO JOINT POWERS AUTHORITY**PAYMENT OF WARRANTS****14-11****For the Month of October-2013**

Check #	Vendor Name	Description	Amount
29372	Arrowhead	Supplies - Lab	Kitchen and lab supplies \$ 235.66
29373	AT & T - 9777	Utilities - Telephone	Phone service - 08/13/13 - 09/12/13 392.33
29374	AT&T	Utilities - Telephone	DSL - 08/10/13 - 09/09/13 73.50
29375	AT&T	Utilities - Telephone	DSL - 08/20/13 - 09/19/13 73.63
29376	Atlas Pumping Service Inc.	Services - Grease & Scum	Grease and scum pumping 277.44
29377	Barracuda Networks, Inc	Utilities - Internet	Network back-up 50.00
29378	The Brickman Group LTD	Services - Landscape	Landscape service - October 385.00
29379	Marisa Buckles	Subsistence - Travel/Rm & Bd	Mileage and AWT Ceremony 37.88
29380	Calscience Environmental Lab	Services - Laboratory	Water sample testing 303.00
29381	Complete Office	Supplies - Shop	Office Supplies 29.80
29382	CS-Amsco	Repair Parts Expense	Valve for Pump 2 1,330.92
29383	CWEA Membership	Dues & Memberships	Membership - C. Larsen 148.00
29384	Dudek & Associates	Services - Engineering	Consulting Services 6,019.00
29385	EDCO Waste & Recycling Service	Utilities - Trash	Trash service - September 202.41
29386	Guardian	Dental/Vision	Dental Insurance - 10/01/13 - 10/31/13 1,236.33
29387	Harrington Industrial Plastics	Repair Parts Expense	Plumbing supplies 363.40
29388	Hawthorne	Repair Parts Expense	Water heater 130.09
29389	Michael Henke	Subsistence - Meals	Seminar and travel 468.80
29390	Henry Troemner, LLC	Services - Testing	Annual Calibration laboratory weights 99.85
29391	Home Depot Credit Services	Supplies - Shop	Repairs, shop and field supplies 225.62
29392	Jani-King of CA, Inc. - SEO	Services - Janitorial	Janitorial service - October 882.64
29393	Jennifer Basco	Subsistence - Meals	Mileage Reimbursement 67.81
29394	JWC Environmental	Capital Outlay	Parts 9,114.47
29395	King Lee Chemical Co.	Supplies - Chemicals	Pretreat Plus-0100-antiscalant/dispersant 1,030.12
29396	The Lawton Group	Services - Temp	Work week - 09/09/13 - 09/15/13 540.00
29397	McMaster-Carr Supply Co.	Supplies - Shop	Various supplies 615.17
29398	MegaPath Corporation	Utilities - Internet	T-1 service - October 279.89
29399	Olivenhain Municipal Water Dis	Rent	OMWD pipeline rental payment 7,861.50
29400	Pacific Safety Center	Training - Safety	Training - D. Kreinbring 175.00
29401	Public Employees- Retirement	Retirement Plan - PERS	Retirement-09/04/13 - 09/27/13 15,331.18
29402	County of San Diego Png/Dev	Prepaid Other	Planning & Development Fee Deposit 1,000.00
29403	Preferred Benefit Insurance	Dental/Vision	Vision insurance - 10/01/13 - 10/31/13 308.90
29404	Santa Fe Irrigation	SFID Distribution Pipeline	Pipeline purchase payment 1,521.69
29405	Sun Life Financial	Life Insurance/Disability	Life and disability insurance-October 1,519.70
29406	Sunbelt Rentals	Equipment Rental/Lease	175KW diesel generator 1,890.00
29407	Terminix Processing Center	Services - Maintenance	Pest control 100.00
29408	Unifirst Corporation	Services - Uniforms	Uniform service 239.40
29409	Vantage Point Transfer Agent	Employee Payroll	Payroll 457 Retirement 5,325.19
29410	Vantage Point Transfer Agent	ICMA Retirement	Payroll 401(a) Retirement 2,637.58
29411	VWR International, Inc.	Supplies - Lab	Tubes and gloves 1,954.63
29412	Ag Tech, LLC	Services - Biosolids Hauling	Biosolids hauling - September 11,023.25
29413	American Backflow	Seminars/Education	Certificate program - M. Piper 75.00
29414	Appliance Repair Bookkeeping	Repair Parts Expense	Repairs 405.17
29415	Aquatic Bioassay	Services - Laboratory	Quarterly Bioassay Analysis 1,040.00
29416	AT & T	Utilities - Telephone	Alarm services 382.82
29417	Atlas Pumping Service Inc.	Services - Grease & Scum	Grease and scum pumping 817.38
29418	BankCard Center	Seminars/Education	Wellness program, membership & training 996.34
29419	Brenntag Pacific, Inc	Supplies - Chemicals	Sodium Tripolyphosphate and Citic Acid 1,260.11
29420	Calscience Environmental Lab	Services - Laboratory	Water sample testing 791.00
29421	CAN-DO-Maintenance Inc.	Services - Maintenance	Wall repair 300.00
29422	Consolidated Electrical Dist.	Repair Parts Expense	Electrical supplies/parts for repair 264.68
29423	Coast Waste Management, Inc.	Utilities - Trash	September 171.67
29424	Complete Office	Supplies - Office	Folders, envelopes, and paper 388.36
29425	Corodata	Rent	Record storage - September 73.74
29426	Dale Kreinbring	Supplies - Shop	Cabinet 485.99
29427	Department of Public Health	Dues & Memberships	Distribution certification renewal - M. Piper 80.00
29428	Golden State Overnight	Postage/Shipping	Mailing samples 26.98
29429	Hach Company	Repair Parts Expense	SC200 controller 3,025.73
29430	Hardy Diagnostics	Supplies - Lab	Filters 246.63

SAN ELIJO JOINT POWERS AUTHORITY**PAYMENT OF WARRANTS****14-11****For the Month of October-2013**

Check #	Vendor Name	Description	Amount
29431	Health and Human Resource	Employee Assistance Program	317.68
29432	Hoch Consulting, APC	Services - Engineering	17,276.25
29433	John Deere Landscapes, Inc.	Repair Parts Expense	64.71
29434	Kennedy/Jenks Consultants	Services - Engineering	3,044.87
29435	Konica Minolta	Services - Maintenance	138.79
29436	The Lawton Group	Services - Temp	540.00
29437	Leaf & Cole, LLP	Services - Accounting	4,220.00
29438	Marine Taxonomic Services, LTD	Services - Laboratory	1,480.00
29439	McMaster-Carr Supply Co.	Supplies - Shop	150.08
29440	Olin Corp - Chlor Alkali	Supplies - Chem - Sodium Hypo	2,759.72
29441	Olivenhain Municipal Water Dis	Services - Engineering	2,015.27
29442	P.E.R.S.	Medical Insurance - Pers	17,098.62
29443	Public Employees- Retirement	Retirement Plan - PERS	15,271.29
29444	Cashier - Jennifer Basco	Supplies - Office	190.92
29445	Plumbers Depot Inc.	Supplies - Shop	502.58
29446	U.S. Postal Service	Postage/Shipping	368.00
29447	ProBuild	Repair Parts Expense	38.86
29448	Procopio Cory Hargreaves	Services - Legal	655.50
29449	Rising Tide Partners	Services - Professional	330.00
29450	San Dieguito Water	Utilities - Water	8,393.90
29451	Santa Fe Irrigation District	Utilities - Water (Suppl.)	2,170.60
29452	Santa Fe Irrigation District	Utilities - Water	75.74
29453	Smart & Final	Dedication Ceremony	71.43
29454	Terminix Processing Center	Services - Maintenance	157.00
29455	Christopher A. Trees	Subsistence - Travel/Rm & Bd	101.00
29456	Unifirst Corporation	Services - Uniforms	171.13
29457	Univar USA Inc.	Supplies - Chemicals	1,250.29
29458	Underground Service Alert/SC	Services - Alarm	73.50
29459	Vantage Point Transfer Agent	Employee Payroll	5,811.63
29460	Vantage Point Transfer Agent	ICMA Retirement	2,634.09
29461	WEX Bank	Fuel	729.41
29462	WorkPartners Occupational	Services - Medical	90.00
	San Elijo Payroll Account	Payroll	62,615.94
	San Elijo Payroll Account	Payroll	66,776.45
			\$ 303,917.63

SAN ELIJO JOINT POWERS AUTHORITY

PAYMENT OF WARRANTS SUMMARY

**For the Month of October-2013
As of November 1, 2013**

PAYMENT OF WARRANTS \$ 303,917.63
Reference Number 14-11

I hereby certify that the demands listed and covered by warrants are correct and just to the best of my knowledge, and that the money is available in the proper funds to pay these demands. The cash flows of the SEJPA, including the Member Agency commitment in their operating budgets to support the operations of the SEJPA, are expected to be adequate to meet the SEJPA's obligations over the next six months. I also certify that the SEJPA's investment portfolio complies with the SEJPA's investment policy.



Paul F. Kinkel
Director of Finance & Administration

STATEMENT OF FUNDS AVAILABLE FOR PAYMENT OF WARRANTS
AND INVESTMENT INFORMATION
As of November 1, 2013

1-Nov-13

FUNDS ON DEPOSIT WITH	AMOUNT
LOCAL AGENCY INVESTMENT FUND <i>(SEPTEMBER 2013 YIELD 0.26%)</i>	
RESTRICTED SRF RESERVE	\$ 630,000.00
UNRESTRICTED DEPOSITS	\$ 5,991,201.99
CALIFORNIA BANK AND TRUST <i>(SEPTEMBER 2013 YIELD 0.01%)</i>	
REGULAR CHECKING	\$ 204,596.99
PAYROLL CHECKING	\$ 5,000.00
 TOTAL RESOURCES	 \$ 6,830,798.98

SAN ELIJO JOINT POWERS AUTHORITY
MEMORANDUM

November 12, 2013

TO: Board of Directors
San Elijo Joint Powers Authority

FROM: General Manager

SUBJECT: SAN ELIJO WATER RECLAMATION FACILITY TREATED EFFLUENT FLOWS –
MONTHLY REPORT

RECOMMENDATION

No action required. This memorandum is submitted for information only.

DISCUSSION

Monthly Treatment Plant Performance and Evaluation

Wastewater treatment for the San Elijo Joint Powers Authority (SEJPA) met all NPDES ocean effluent limitation requirements for the month of September 2013. The primary indicators of treatment performance include the removal of Carbonaceous Biochemical Oxygen Demand (CBOD) and Total Suspended Solids (TSS). The SEJPA is required to remove a minimum of 85 percent of the CBOD and TSS from the wastewater. Treatment levels for CBOD and TSS were 98 percent removal for both constituents in the period (as shown in Figure 1 and Figure 2).

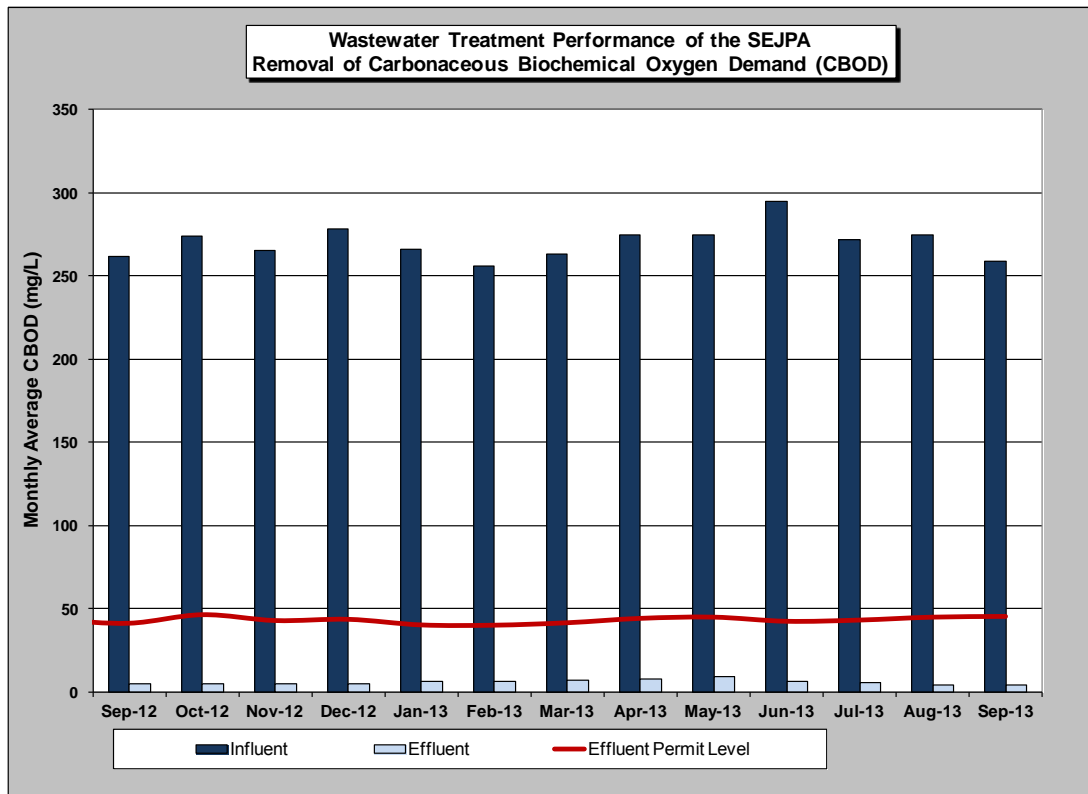


FIGURE 1

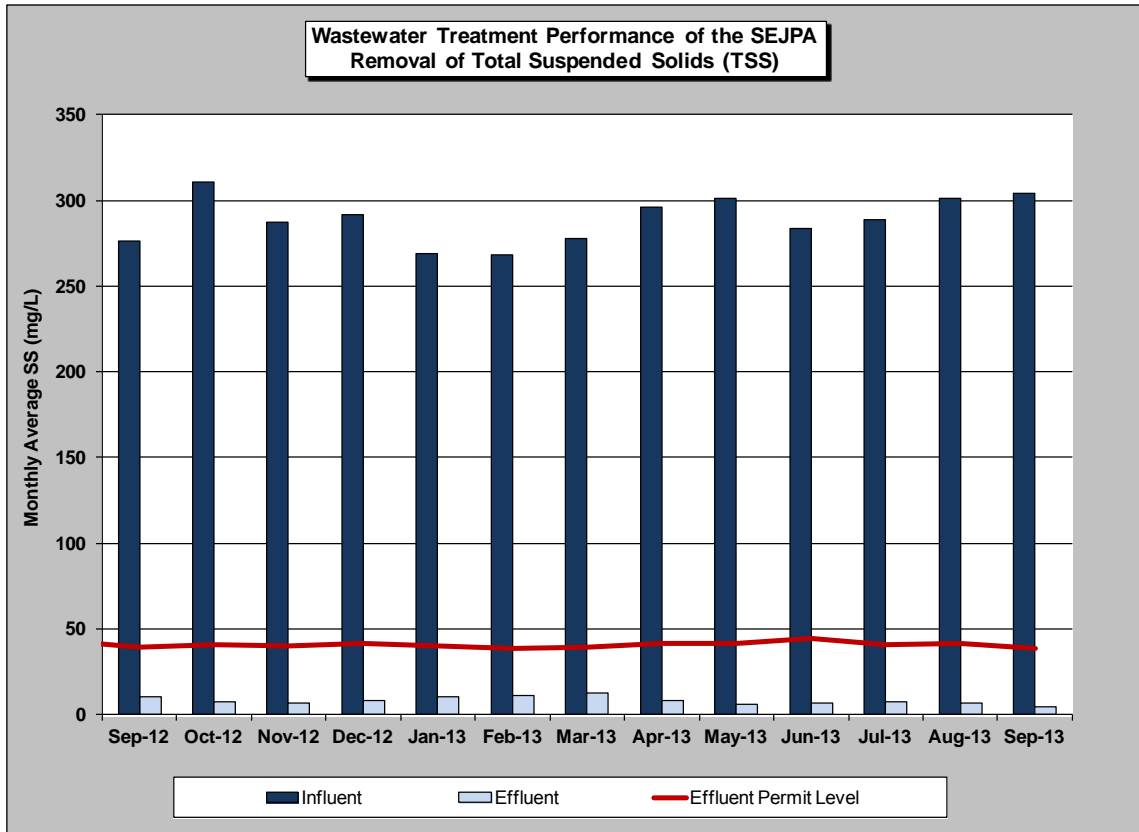


FIGURE 2

Member Agency Flows

Presented below are the influent and effluent flows for the month of September. Average daily influent flows were recorded for each Member Agency. Total effluent flow was calculated for the San Elijo Water Reclamation Facility.

	September	
	Influent (mgd)	Effluent (mgd)*
Cardiff Sanitary Division	1.343	0.403
City of Solana Beach	1.193	0.358
Rancho Santa Fe SID	0.117	0.036
Total San Elijo WRF Flow	2.653	0.797

Notes: As of July 1995, Rancho Santa Fe Community Services District (CSD) combined SID #2 and SID #3 into one Sewer Improvement District (SID).

* Effluent is calculated by subtracting the recycled water production from the influent wastewater.

Table 1 (next page) presents the historical average, maximum, and unit influent and effluent flow rates per month for each of the Member Agencies since September 2008. It also presents the number of connected Equivalent Dwelling Units (EDUs) for each of the Member Agencies during this same time period.

Figure 3 (below) presents the 5-year historical average daily flows per month for each Member Agency. This is to provide a historical overview of the average treated flow by each agency. As shown in the figure, the average treated flow has been approximately 2.7 million gallons per day (mgd). Also shown in Figure 3 is the total wastewater treatment capacity of the plant, 5.25 mgd, of which each Member Agency has the right to 2.5 mgd, and Rancho Santa Fe Community Service District has the right to 0.25 mgd.

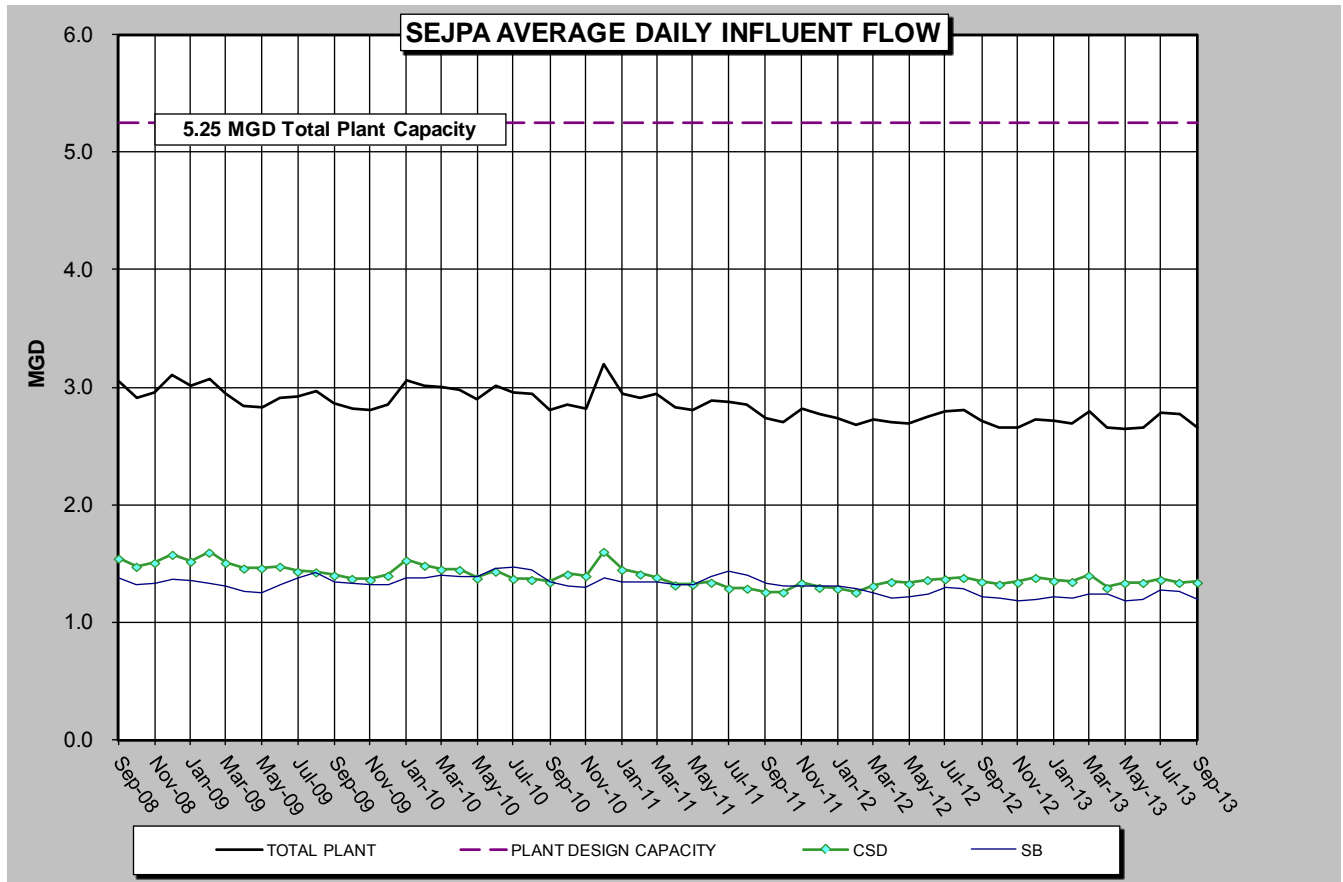


Figure 3

City of Escondido Flows

The average and peak flow rate from the City of Escondido Hale Avenue Resource Recovery Facility, which discharges through the San Elijo Ocean Outfall, is reported below. The following average flow rate and peak flow rate is reported by the City of Escondido for the month of September.

	September (mgd)
Escondido (Average flow rate)	8.22
Escondido (Peak flow rate)	15.6

Connected Equivalent Dwelling Units

The number of EDUs connected for each of the Member Agencies for the month of September is as follows:

	September (EDU)
Cardiff Sanitary Division	8,311
Rancho Santa Fe SID	494
City of Solana Beach	7,428
San Diego (to Solana Beach)	300
Total EDUs to System	16,533

Respectfully submitted,



Michael T. Thornton, P.E.
General Manager

SAN ELIJO JOINT POWERS AUTHORITY
MEMORANDUM

November 12, 2013

TO: Board of Directors
San Elijo Joint Powers Authority

FROM: General Manager

SUBJECT: SAN ELIJO WATER RECLAMATION PROGRAM – MONTHLY REPORT

RECOMMENDATION

No action required. This memorandum is submitted for information only.

DISCUSSION

Recycled Water Production

For the month of September 2013, recycled water demand was 184.98 acre-feet (AF), which was met using 184.98 AF of recycled water and 0.00 AF of supplementation with potable water. This total acre-feet delivered is the highest monthly total on record since the program began.

In September 2013 staff noted a few isolated positive coliform sample results in the recycled water effluent. These incidents began occurring intermittently during startup of the new Advanced Water Treatment system. After several months of diagnostic efforts, the root cause was identified and corrected. The Regional Water Quality Control Board, which is the permitting agency with primary responsibility for the treatment system performance was informed of this issue and corrective actions taken. Such treatment system disturbance is not uncommon during water treatment plant construction.

Figure 1 (attached) provides monthly supply demands for recycled water since September 2000. Figure 2 (attached) provides a graphical view of annual recycled water demand spanning thirteen completed fiscal years and the current fiscal year. Figure 3 (attached) shows the September recycled water demand for each September since the program began.

Respectfully submitted,



Michael T. Thornton, P.E.
General Manager

Figure 1 - MONTHLY RECYCLED WATER DEMAND

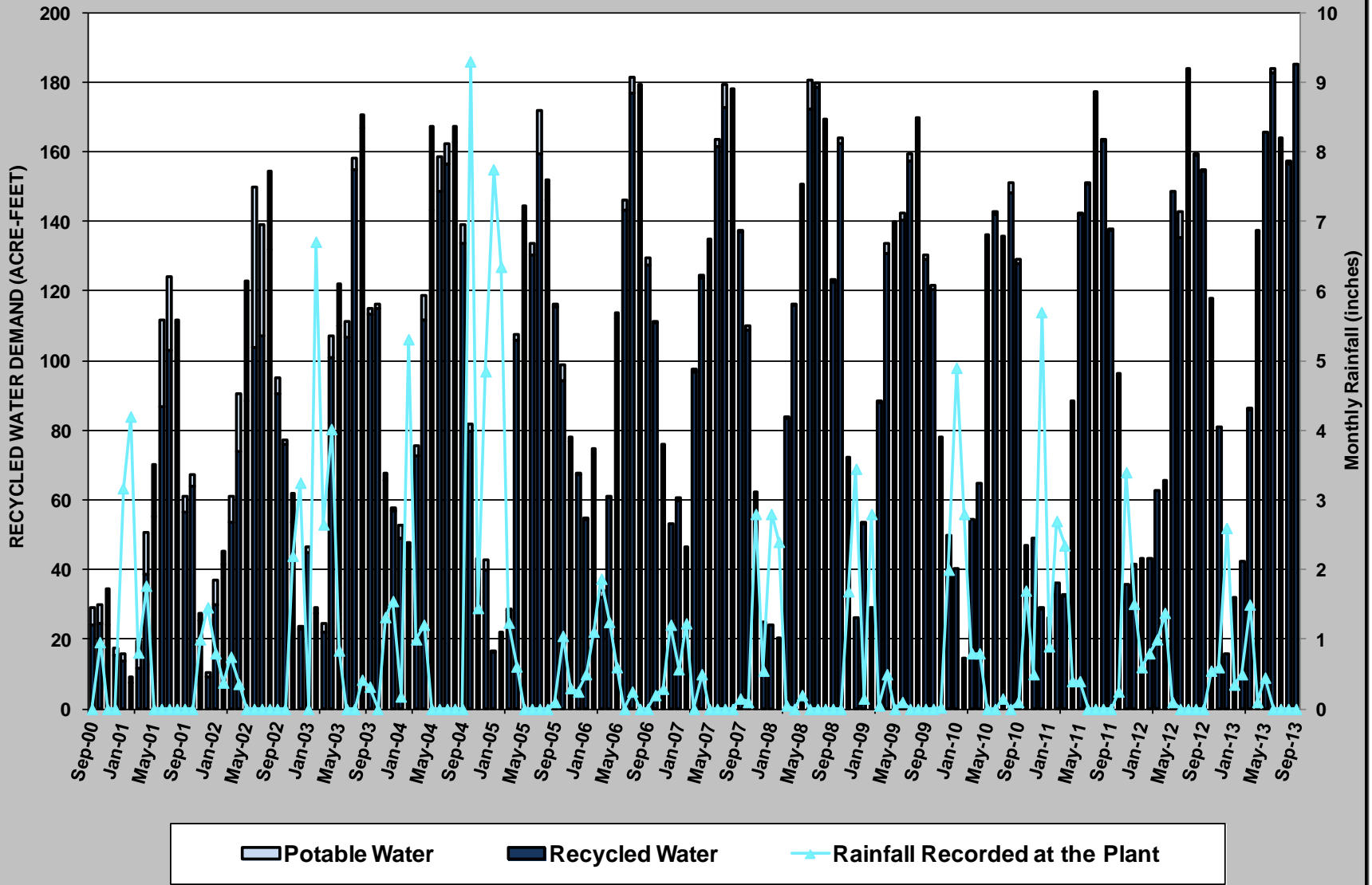


Figure 2 - RECYCLED WATER DEMAND by FISCAL YEAR

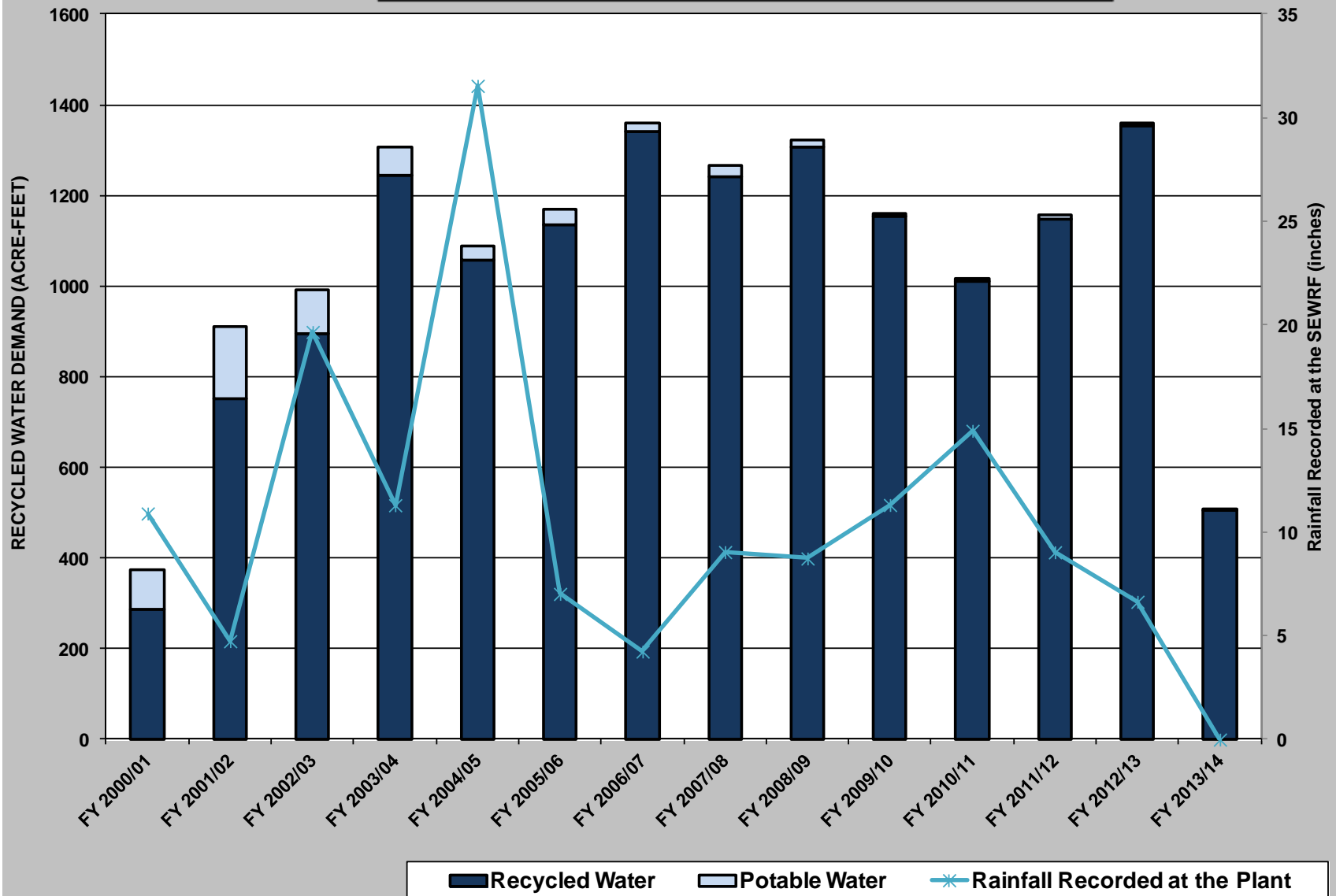
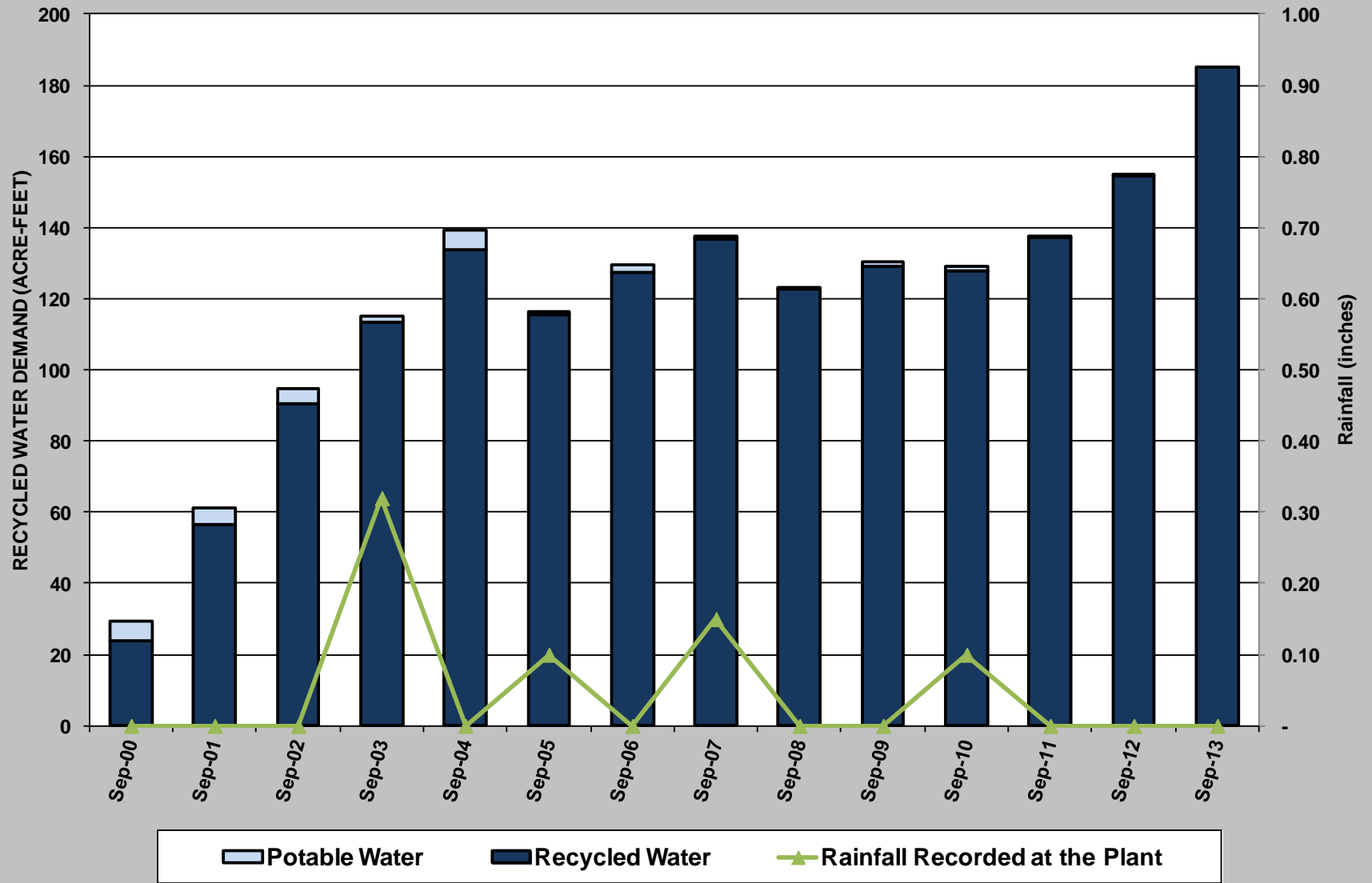


FIGURE 3 - SEPTEMBER RECYCLED WATER DEMAND



*

AGENDA ITEM NO. 11

SAN ELIJO JOINT POWERS AUTHORITY
MEMORANDUM

November 12, 2013

TO: Board of Directors
San Elijo Joint Powers Authority

FROM: General Manager

SUBJECT: REVISED RULES AND REGULATIONS FOR RECYCLED WATER SERVICE

RECOMMENDATION

It is recommended that the Board of Directors:

1. Approve Resolution 2014-01 adopting revised Rules and Regulations for Recycled Water Service; and
2. Discuss and take other action as appropriate.

BACKGROUND

As a means of communicating safe operational practices for a municipal recycled water system, the Regional Water Quality Control Board requires recycled water agencies to adopt rules and regulations. The rules and regulations set parameters for use of recycled water and identifies various prohibited practices. On September 9, 1999, prior to the commencement of the SEJPA's recycled water program, the agency adopted Resolution No. 99-07 adopting the Rules and Regulations for Recycled Water Service. On March 17, 2000, the Board approved Resolution 2000-01 revising the rules and regulations for recycled water service.

DISCUSSION

When the Regional Water Quality Control Board approved Amendment No. 1 to Order No. R9-2000-10 in March 2013 for the addition of the Advanced Water Treatment Facility, they required the SEJPA to add a statement into the Rules and Regulations to address the nutrient load of the recycled water and prohibit the application of fertilizer in excess of the nutrient demands of the landscape vegetation or agricultural crops. The intent of this requirement is to ensure the application of recycled water does not overload the groundwater basins with nitrogen and phosphorus that are present in recycled water and typically added to landscaping by fertilizer.

To get a better understanding of the potential impacts of this new requirement to the end user, staff engaged the Superintendent of the Encinitas Ranch Golf Course to inquire about their fertilizer usage. The golf course superintendent informed staff that the golf course does not use fertilizer when irrigating with recycled water. The only time they may add fertilizer is in the winter

when rain does not allow them to irrigate. In speaking with other recycled water customers, it appears that very few of them use fertilizers with the recycled water. Based on this information, it does not appear that this new requirement will have much impact to the typical recycled water customer.

To comply with the Regional Water Quality Control Board, Amendment No. 1 to Order No. R9-2000-10, staff has revised the rules and regulations to add statements addressing the nutrient load of the recycled water to comply with this requirement.

FINANCIAL IMPACT

This change has no financial impact.

It is therefore recommended that the Board of Directors:

1. Approve Resolution 2014-01 adopting revised Rules and Regulations for Recycled Water Service; and
2. Discuss and take other action as appropriate.

Respectfully submitted,



Michael T. Thornton, P.E.
General Manager

Attachment 1: Resolution No. 2014-01

Attachment 2: Rules and Regulations for Recycled Water Service San Elijo Joint Powers Authority

ATTACHMENT 1

RESOLUTION NO. 2014-01

**A RESOLUTION OF
THE BOARD OF DIRECTORS OF THE SAN ELIJO JOINT POWERS AUTHORITY
ADOPTING REVISED RULES AND REGULATIONS
FOR RECYCLED WATER SERVICE**

WHEREAS, the San Elijo Joint Powers Authority (SEJPA) has constructed treatment and distribution facilities for provision of recycled water; and

WHEREAS, the SEJPA previously adopted Rules and Regulations via Resolution No. 99-07; and

WHEREAS, the SEJPA previously adopted Revised Rules and Regulations via Resolution No. 2000-01; and

WHEREAS, the Regional Water Quality Control Board (RWQCB) requires certain revisions to clarify the nutrient loading of recycled water when Amendment No. 1 to Waste Discharge Requirement 2000-10 was adopted; and

WHEREAS, the SEJPA; has prepared revised Rules and Regulations in compliance with the RWQCB requirements,

NOW, THEREFORE, BE IT RESOLVED that the Board of Directors of the San Elijo Joint Powers Authority hereby adopts the "Rules and Regulations for Recycled Water Service – Revised November 2013."

PASSED AND ADOPTED at a regular meeting of the Board of Directors of the San Elijo Joint Powers Authority, California, held on this 12th day of November, 2013 by the following vote:

AYES: Boardmembers:

NOES: Boardmembers:

ABSENT: Boardmembers:

ABSTAIN: Boardmembers:

Thomas M. Campbell, Chairperson
SEJPA Board of Directors

ATTEST:

Michael T. Thornton, P.E.
Secretary of the Board

**RULES AND REGULATIONS
FOR
RECYCLED WATER SERVICE
SAN ELIJO JOINT POWERS AUTHORITY**

ADMINISTRATION

~~Camp Dresser & McKee
1925 Palomar Oaks Way, Suite 300
Carlsbad, CA 92008
(760) 438-7755 (760) 438-7411 FAX~~

OPERATIONS

San Elijo Water Reclamation Facility
2695 Manchester Avenue
Cardiff, CA 92007
(760) 753-6203 (760) 753-5935

AUGUST 1999

(REVISED DECEMBER 1999)

(REVISED FEBRUARY 2000)

(REVISED NOVEMBER 2013)

Contents

Introduction

1.1	General	1-1
1.2	Purpose	1-1
1.3	Policy	1-2
1.3.1	Recycled Water Use	1-2
1.4	Intent	1-2
1.5	SEJPA's Goals and Objectives	1-3
1.5.1	Operations	1-3
1.6	Scope of Rules and Regulations	1-3
1.7	Modifications to Rules and Regulations General.....	1-3

General Provisions

2.1	Specific Authority	2-1
2.2	Severability	2-1
2.3	Enforcement	2-1
2.4	Amendments	2-1
2.5	Precedence	2-1
2.6	Local Authority	2-2
2.7	Service Area	2-2
2.8	Definitions	2-2
2.9	System Responsibility	2-8
2.10	Protection of Public Health	2-8
2.11	Authorized Uses	2-8
2.12	Approved Use Areas.....	2-8
2.13	Customer Complaints	2-9
2.14	Recycled Water User Permit Process	2-9
2.15	Connection To Potable Water	2-10
2.15.1	Temporary Connections to Potable Water System.....	2-10
2.15.2	Permanent Connections to Potable Water System	2-10
2.16	Design approval.....	2-10
2.17	Construction Inspection.....	2-11
2.18	Final Inspection.....	2-11
2.19	Service Conditions.....	2-11
2.20	Liability	2-11
2.21	Surveillance	2-12
2.22	Suspension and Termination of Recycled Water Service	2-12
2.23	Sanctions	2-13
2.23.1	Runoff Conditions	2-13
2.23.2	Ponding Conditions	2-13

2.23.3	Windblown Spray Conditions.....	2-13
2.23.4	Unapproved Uses.....	2-13
2.23.5	Cross Connections.....	2-13
2.23.6	Unprotected Drinking Fountains.....	2-14
2.23.7	Unprotected Public Facilities.....	2-14
2.23.8	Hose Bibbs.....	2-14
2.23.9	Fire Hydrants.....	2-14
2.23.10	Unprotected Domestic Water Supply Well.....	2-14
2.23.11	Recycled Water Storage.....	2-15
2.23.12	Nutrient Loading.....	2-15

Requirements for Design and Operation

3.1	Design Requirements.....	3-1
3.1.1	On-site Irrigation Systems.....	3-1
3.1.2	Construction Water Facilities.....	3-2
3.2	Operation Requirements.....	3-3
3.2.1	On-site Irrigation Systems.....	3-3
3.2.2	Construction Water Facilities.....	3-5
3.3	Submittals and Records.....	3-6
3.3.1	On-site Irrigation Systems.....	3-6
3.3.2	Construction Water Facilities.....	3-12

Specifications for Construction

4.1	General Conditions.....	4-1
4.1.1	Trade Names or Equals.....	4-1
4.1.2	Interpretation of Specifications and Detail Drawings.....	4-1
4.1.3	Permits and Licenses.....	4-1
4.1.4	Connections to Existing Facilities.....	4-1
4.1.5	Personal Liability.....	4-1
4.1.6	Loss and Damage.....	4-1
4.1.7	Legal Responsibility.....	4-2
4.1.8	Inspection Authority.....	4-2
4.1.9	Connections to Existing SEJPA Facilities.....	4-3
4.2	Materials of Construction.....	4-3
4.2.1	On-site Irrigation Systems.....	4-3
4.2.2	Construction Water Facilities.....	4-5
4.3	Methods of Construction.....	4-5
4.3.1	On-site Irrigation Systems.....	4-5
4.3.2	Construction Water Facilities.....	4-6
4.4	Inspection.....	4-7
4.4.1	On-site Irrigation Systems.....	4-7
4.4.2	Construction Water Facilities.....	4-8
4.5	Review and Testing.....	4-9

4.5.1	On-site Irrigation Systems.....	4-9
4.5.2	Construction Water Facilities	4-10
4.5.3	Operational Testing.....	4-10
4.6	Identification	4-11
4.6.1	On-site Irrigation Systems.....	4-11
4.6.2	Construction Water Facilities	4-12

Procedures for Administration

5.1	Obtaining Service.....	5-1
5.1.1	Application Submittal.....	5-1
5.1.2	SEJPA Evaluation	5-2
5.1.3	Authority Determination.....	5-2
5.1.4	Issuing of User Permit (Service Agreement)	5-2
5.1.5	Establishing Service Connection	5-2
5.1.6	Certification Submittal.....	5-3
5.1.7	Service Start-up.....	5-3
5.1.8	Confirmation of Service Start-up	5-3
5.2	Conditions of Service	5-4
5.2.1	Regulatory Conditions.....	5-4
5.2.2	Operational Conditions	5-4
5.3	System Supervision	5-5
5.4	Reporting	5-5
5.4.1	To the Customer	5-5
5.4.2	To the Regulatory Agencies	5-5
5.5	Violations.....	5-6
5.5.1	Determination.....	5-6
5.5.2	Specific Violations	5-6
5.5.3	Corrective Action.....	5-6
5.5.4	Appeal.....	5-7
5.6	Suspending and/or Terminating Service.....	5-7
5.6.1	Determination.....	5-7
5.6.2	Notification.....	5-7
5.6.3	Appeal.....	5-7
5.6.4	Payment of Reconnection Costs	5-7
5.7	Rate and Fee Schedule	5-8
5.7.1	Recycled Water Service Rates.....	5-8
5.7.2	Change or Rates.....	5-8
5.7.3	Metering.....	5-8
5.7.4	Billing	5-8
5.7.5	Time and Manner of Payment for Recycled Water Bills.....	5-8
5.7.6	Delinquent Accounts	5-9

Exhibits

Exhibit A Application for Recycled Water Service E-1
Exhibit B Certification Form for Recycled Water Service E-3

Section 1

Introduction

1.1 General

The San Elijo Joint Powers Authority (SEJPA) ~~plans to operate~~ and maintains a water treatment facility located at 2695 Manchester Avenue, Cardiff, California 92007, and distribution system, which enables it to provide recycled water at tertiary treatment levels.

The SEJPA will generally operate as the wholesaler of recycled water to the ~~three-four~~ local water purveyors; San Dieguito Water District, Santa Fe Irrigation District, [Olivenhain Municipal Water District](#), and the City of Del Mar. Each of these water purveyors has adopted by resolution their own Rules and Regulations. ~~The City of Del Mar adopted by Resolution No. _____ Rules and Regulations developed by the SEJPA.~~ The SEJPA ~~will serve~~ recycled water directly at the San Elijo Water Reclamation Facility (WRF) and to other sites not served by the ~~three-four~~ purveyors. ~~Currently, the Caltrans site at Via de la Valle in the City of San Diego is the only other direct service site.~~ Therefore, these Rules and Regulations are intended to provide guidelines for those customers served directly by the SEJPA and to reflect the basic requirements followed by the water purveyor agencies.

Uses of recycled water may include, but not be limited to, greenbelt irrigation, agricultural irrigation, industrial process and, commercial uses, landscape or recreational impoundment purposes, wildlife habitat, and groundwater recharge. This alternate water supply allows large quantities of higher quality potable water to be made available for domestic use.

1.2 Purpose

The purpose of these Rules and Regulations is to promote the conservation and reuse of water resources and provide for the maximum public benefit from the use of the recycled water. Such measures are consistent with the responsibilities and obligations of the SEJPA to wisely utilize the water resources of the State of California. These Rules and Regulations adopted by the SEJPA are not intended to supersede the adopted Rules and Regulations of the water agencies contracted to purvey recycled water within or outside the SEJPA service area or SEJPA jurisdiction. However, the SEJPA will take full responsibility for implementing these Rules and Regulations at the 22nd District Agricultural Association (Del Mar Fairgrounds) within the City of Del Mar. The SEJPA may also be contracted by the other water purveying agencies to enforce the Rules & Regulations. The SEJPA will not deliver recycled water to any water agency that has not adopted Rules and Regulations acceptable to the Regional Board Executive Officer and the State Department of Health Services. The SEJPA will cease recycled water service to any water agency that does not enforce the requirements of that agency's Rules and Regulations.

1.3 POLICY

1.3.1 Recycled Water Use

It shall hereafter be SEJPA policy that recycled water be used for any purposes approved for non- domestic water use, to the maximum extent possible consistent with availability. Use of potable water for non-domestic uses shall not be considered the most beneficial use of a natural resource and shall be avoided to the maximum extent possible.

1.3.2 Priority

Recycled water shall be provided on a first come first served basis, as long as recycled water is available.

1.3.3 Equitable Allocation of Costs

The SEJPA is committed to expanding its recycled water distribution, pumping, treatment and storage facilities in order to maximize reuse and provide alternate, or new sources of water. Each recycled water user shall be charged their fair share of all costs incurred by the SEJPA in providing that service, as determined by the SEJPA.

1.4 Intent

It is the SEJPA's intent to provide recycled water wherever its use is economically, financially and technically feasible, consistent with regulatory requirements, the preservation of public health and welfare, and the environment. This shall be accomplished through the collection and treatment of wastewater, and the beneficial reuse of the resultant recycled water in compliance with applicable Federal, State and local regulations.

1.5 SEJPA's Goals and Objectives

Recycled water shall be distributed and used in a manner that meets all Federal, State, and local requirements and which shall achieve the following:

1. Prevent direct human consumption of recycled water through:
 - Adherence to all applicable rules and regulations.
 - Posting of warning signs by the user.
 - Cross-connection/backflow prevention program.
2. Run-off and ponding of recycled water shall be controlled at all times by controlling the installation and operation of the systems using recycled water.
3. Prevention of contamination of potable water supplies.

4. Isolate contamination by other sources, such as wastewater, sludge, urban run-off, or other substances that may come into contact with the recycled water. The use of gray water is expressly excluded from these Rules and Regulations.

1.5.1 Operations

SEJPA shall provide dependable service at required quality for approved uses to authorized users.

1.6 Scope Of Rules and Regulations

The provisions of these Rules and Regulations shall govern the requirements for recycled water use, the commencement and termination of recycled water service, and the conditions and regulations of such within the SEJPA jurisdiction.

These Rules and Regulations shall be adopted by Resolution No. 2000-01 of the SEJPA Board of Directors.

~~The City of Del Mar has granted the SEJPA authority and responsibility to enforce the Rules and Regulations developed by the SEJPA and adopted by the City of Del Mar by Resolution No. _____ for recycled water service to the 22nd District Agricultural Association with the City of Del Mar.~~ These Rules and Regulations shall be interpreted in accordance with the purpose, policy and intent of these Rules and Regulations and the definitions as set forth in Section 2 herein. The provisions of these Rules and Regulations shall apply to the use of all recycled water delivered by the SEJPA. To comply with applicable Federal, State and Local regulatory agency requirements, provisions are made in these Rules and Regulations for the regulation of recycled water use. These Rules and Regulations also provide for the establishment of penalties for violation of these Rules and Regulations.

1.7 Modifications to Rules and Regulations

These Rules and Regulations may be modified, with consent of all parties, if governing regulations change.

Section 2

General Provisions

2.1 Specific Authority

The San Elijo Joint Powers Authority Board of Directors shall promulgate the various regulations for recycled water, Resolution No. 2000-01, on March 17, 2000.

2.2 Severability

If any section, subsection, sentence, clause or phrase of these Regulations is for any reason held to be invalid or unconstitutional, such decision shall not affect the remaining portions of these Regulations. The SEJPA hereby declares that it would have approved said Regulations by section, subsection, sentence, clause or phrase thereof, irrespective of the fact that any one or more sections, subsections, sentences, clauses or phrases be declared invalid or unconstitutional.

2.3 Enforcement

Except for Section 2.15 of these Rules and Regulations, which will be enforced by the City of Del Mar and the SEJPA at the 22nd District Agricultural Association with the City of Del Mar, the SEJPA shall enforce these Regulations in all matters concerning the use of any recycled water and/or recycled water service. Each and every condition and requirement with respect to the use, connection, disconnection, reconnection, and/or discontinuance of recycled water and/or recycled water service provided by and set forth in these Regulations shall apply with equal force and effect to any person, persons, or firm, public or private. There shall be no deviation from these Regulations except upon written authorization by the SEJPA Manager, who will act at all times within any and all applicable regulatory agency constraints. An appeal procedure shall be provided and action of the SEJPA's Board of Directors shall be final.

2.4 Amendments

These Regulations may be amended by a SEJPA resolution at any regular or special meeting for cause determined by the SEJPA without the approval of any Customer or Owner. Moreover, any amendments so made are immediately incorporated by the Regulations and shall be administered as such. Insofar as the Regulations support portions of the California Administration Code, Title 17 and Title 22, and Discharge Order No. 2000-10 of the SEJPA, any amendments to those documents are also immediately incorporated by the Regulations.

2.5 Precedence

These Regulations shall take precedence when they require higher quality material, equipment, design and/or construction methods than are required by applicable local governing codes, rules and regulations. This precedence shall only apply to those users served directly by the SEJPA and not to those regulated by the Rules and

Regulations of a water purveying agency, except for the 22nd District Agricultural Association within the City of Del Mar, who through adoption of Rules and Regulations developed by the SEJPA, will fall under SEJPA's enforcement jurisdiction.

2.6 Local Authority

Except as noted in Section 1.05 of these Rules and Regulations, all on-site facilities shall be designed to meet the standards of the local governing codes, rules and regulations.

2.7 Service Area

The Regulations set forth herein pertain to recycled water service to lands and/or improvements lying within the boundaries of the SEJPA service area, including the City of Del Mar, unless that service is provided by one of the SEJPA's contracted recycled water purveyors. In that case, the Rules and Regulations adopted by the purveyor agency prevail except the City of Del Mar. The SEJPA shall be responsible for the implementation of Rules and Regulations at the 22nd Agricultural District.

2.8 Definitions

The terms hereinafter set forth unless otherwise specified shall have the following meanings:

AIR-GAP SEPARATION - A physical break between a supply pipe and a receiving vessel. The air gap shall be at least double the diameter of the supply pipe, measured vertically above the top rim of the vessel, and in no case less than one inch.

APPLICANT - An Owner or his authorized representative who applies for recycled water service under the terms of these Regulations. An approved Applicant becomes a Customer.

APPLICATION RATE - The rate, at which recycled water is applied to an irrigation or construction area, expressed in inches per hour.

APPROVED BACKFLOW PREVENTER - A device installed to protect the potable water supply from contamination by recycled water. This device shall be recognized as such by the Foundation for Cross-Connection Control and Hydraulic Research, University of Southern California and the State Department of Health Services.

APPROVED CHECK VALVE - A check valve that seats readily and completely. It must be carefully machined to have free moving parts and assured water tightness. The face of the closure element and valve seat must be bronze, composition, or other non-corrodible, non-sticking material, machined for easy, dependable operation. The closure element (e.g., clapper) shall be internally weighted or otherwise internally equipped to promote rapid and positive closure in all sizes where this feature is

obtainable. An approved check valve is only one component of an approved backflow prevention assembly.

APPROVED DOUBLE CHECK VALVE ASSEMBLY - An assembly approved by the SEJPA consisting of two independently acting approved check valves including tightly closing resilient seated shut-off valves on each side of the check valve assembly and connections available for testing the water tightness of each check valve.

APPROVED REDUCED PRESSURE PRINCIPLE BACKFLOW PREVENTION DEVICE - A device approved by the SEJPA containing two independently acting approved check valves and an automatically operating differential relief valve located between the two check valves, two tightly resilient seated shut-off valves, and equipped with necessary appurtenances for testing.

APPROVED USE - A use of recycled water in a manner, and for a purpose, designated in a user permit issued by the SEJPA and in compliance with any and all applicable Regulatory Agency requirements.

APPROVED USE AREA - A site, with well-defined boundaries, designated in a user permit issued by the SEJPA to receive recycled water for an approved use and acknowledged by any and all applicable Regulatory Agencies.

AS-BUILT DRAWINGS - (See Record Drawings)

AUTOMATIC SYSTEM - In reference to landscape irrigation systems, automatic controllers, valves, and associated equipment required for the programming of effective application rates when using recycled water.

CITY - City of Del Mar

CONSTRUCTION PERSONNEL - Employees of the Contractor who will be working in and around recycled water facilities.

CONSTRUCTION USE - An approved use of recycled water to support construction activities such as soil compaction during grading.

CONSTRUCTION WATER FACILITIES - Facilities installed for the purpose of serving recycled water (usually temporarily) for a construction use.

CONTRACTOR - A person, persons, or firm entering into a legal agreement with the Owner or Customer for the performance of work on all or any portion of facilities subject to these Regulations.

CROSS CONNECTION - Any unprotected connection between any part of a water system used or intended to supply water for drinking purposes and any source or

system containing water or substances that is not or cannot be approved as safe, wholesome, and potable for human consumption.

CUSTOMER - Any person, firm, corporation, association, or agency who uses or desires to obtain recycled water service directly from the SEJPA.

DECORATIVE IMPOUNDMENT - A human-made lake, pond, lagoon or other body of water that is used wholly or partly for landscape, scenic or non-contact recreational purposes.

DESIGN AREA - A site, with well-defined boundaries, proposed to receive recycled water for an approved use as delineated in an application for a user permit.

DESIGNEE - Person designated by the JPA Manager to review objections to the preliminary determination of the feasibility of a site for conversion to recycled water services.

DISCHARGER - The San Elijo Joint Powers Authority.

EFFLUENT - Treated wastewater discharged from a water reclamation plant.

ENGINEER - Consulting or Staff Engineer of the SEJPA or an authorized agent.

GENERAL PUBLIC - Any person or persons at large who may come in contact with facilities and/or areas where recycled water is approved for use.

INFILTRATION RATE - The rate, at which the soil will accept water as applied during irrigation, expressed in inches per hour.

INSPECTION AND COMPLIANCE PLAN - The "San Elijo Joint Powers Authority Recycled Water Program: Inspection and Compliance Plan for Recycled Water Customers" which serves as the Best Management Practices by establishing a program of surveillance, investigation, and reporting to ensure compliance with the Rules and Regulations.

INSPECTOR - Any person authorized by the SEJPA or Regulatory Agencies to perform inspection of on-site facilities prior to construction, during construction, after construction and during operation.

IRRIGATION AREA - (See Approved Use Area).

IRRIGATION PERIOD - The time, from start of water flow to cessation, during which a specific area receives recycled water by direct irrigation application, regardless of how often the specific area is irrigated - that is, the length of the duty cycle.

IRRIGATION USE - An approved use of recycled water for landscape irrigation as defined for recycled water under Title 22, Chapter 2, Article 4, of the California Administrative Code.

MANAGER - The SEJPA Manager.

NONDOMESTIC WATER - (See Recycled Water)

OBJECTOR - Person or agency objection to preliminary determination of feasibility of a site for conversion to recycled water service

OFF-SITE FACILITIES - Water facilities from the source of supply to the point of connection with the on-site facilities, normally up to and including the water meter.

ON-SITE FACILITIES - Water facilities under the control of the owner, normally downstream from the water meter.

OPERATION PERSONNEL - Any employee of a Customer, whether permanent or temporary, or any contracted worker whose regular or assigned work involves the supervision, operation, or maintenance of equipment on any portion of facilities using recycled water.

OPERATOR - Any person, firm, corporation, or association legislated by the SEJPA to operate the WRF.

OWNER - Any holder of legal title, contract purchaser, or lessee under a lease with an unexpired term of more than one (1) year, of property for which recycled water service has been requested or established.

PEAK MOISTURE DEMAND - The demand during those periods of maximum seasonal temperatures and plant growth and, hence, equal to the maximum seasonal net evapotranspiration requirements.

PLANS - The plans, working drawings, detail drawings, profiles, typical cross sections, and supplemental drawings, or reproductions thereof, approved by the Engineer, which show locations, character, dimensions, or details of the work.

PONDING - Retention of recycled water on the surface of the ground or other natural or manmade surface for a period of time following the cessation of an approved recycled water use activity such that a hazard or potential hazard to the public health results.

POTABLE WATER - That water which is pure and wholesome, does not endanger the lives or health of human beings, and conforms to the latest edition of the United States Public Health Service Drinking Water Standards, the California Safe Drinking Water Act, or other applicable standards.

PURVEYOR SYSTEM SUPERVISOR - The SEJPA shall designate a representative who is responsible for operation and maintenance of the recycled water distribution system, prevention of cross-connections, and maintenance of the facilities plans in "as-built" form. The Purveyor System Supervisor may be a representative of the SEJPA and/or a representative of an individual agency contracted with the SEJPA. For the purposes of these Regulations, the Purveyor System Supervisor is a representative of the SEJPA.

RATE AND FEE SCHEDULE - The schedule of all rates, charges, fees and assessments to be made in connection with the use of recycled water as approved or as amended by the SEJPA.

RECYCLED WATER - As defined in Title 22, Chapter 3 of the California Administrative Code, hereinafter referred to as the "Code," means "water which, as a result of treatment of domestic wastewater, is suitable for direct beneficial use or a controlled use that otherwise would not occur" such treatment of domestic wastewater having been accomplished in accordance with the criteria, including the level of constituents in combination with the means for assurance of reliability, as set forth in the Code.

RECYCLED WATER PERMIT - (See User Permit).

RECYCLED WATER SYSTEM - Facilities used in treatment, conveyance, distribution, and irrigation with recycled water.

RECYCLED WATER SITE SUPERVISOR - The water purveyor (SEJPA for the purposes of these Regulations) shall designate a representative who is responsible for inspection of irrigation lines, sprinklers and emitters and performance of standard observations. The Customer may designate a qualified employee to perform these duties. The site supervisor shall attend the San Diego County Water Authority Use Site Supervisor Class.

RECORD (AS-BUILT) DRAWINGS - Drawings that correctly show the completed Customer facilities as constructed or modified. These drawings shall also show all potable water lines.

REGIONAL BOARD - The California Regional Water Quality Control Board, San Diego Region.

REGULATIONS - The "Rules and Regulations for Recycled Water Service to End-Users Directly by the San Elijo Joint Powers Authority."

REGULATORY AGENCIES - Those public agencies legally constituted to protect the public health and water quality, such as the California Department of Health Services, the Regional Board, and the San Diego County Department of Environmental Health.

SEJPA – The San Elijo Joint Powers Authority.

SERVICE - The furnishing of recycled water to a Customer through a metered connection.

SYSTEM FAILURE - Any malfunction of facilities that could lead to a violation of these Regulations.

TERM - All terms relating to matters of opinion or judgment, such as in regard to approvals, requirements, directions, or acceptances, denote the opinion or judgments of the SEJPA.

TREATED WASTEWATER - Wastewater treated in accordance with the requirements of the SEJPA's Discharge Order No. 2000-10 issued by the Regional Board.

UNAUTHORIZED DISCHARGE - Any release of recycled water that violates these Regulations or any and all applicable Federal, State, or local statutes, regulations, ordinances, contracts, or other requirements.

USER - (See Customer)

USER PERMIT - A permit issued by the SEJPA to a recycled water service Applicant after the satisfactory completion of the service application procedures set forth in these Regulations. This permit constitutes a service agreement that legally binds the Customer to all conditions in these Regulations and to any and all applicable Regulatory Agency requirements.

VIOLATION - Noncompliance with any condition or conditions of these Regulations and/or a user permit by any person, action, or occurrence, whether willfully or by accident.

WASTE DISCHARGE REQUIREMENTS - San Elijo Joint Powers Authority Order No. 2000-10, as approved and amended by the Regional Board.

WATER - In the general usage of these Regulations, potable water.

WATER PURVEYOR - The agency responsible for selling water (potable or recycled) to customers.

WINDBLOWN SPRAY - Dispersed, airborne particles of recycled water capable of being transmitted through the air to locations other than that for which the direct application of recycled water is approved.

WORK - The entire improvement proposed to be constructed pursuant to a legal agreement and consistent with these Regulations.

WRF - San Elijo Water Reclamation Facility.

2.9 System Responsibility

All recycled water facilities up to ~~and including~~ the recycled water meter, are the property of the SEJPA and shall be under the management and control of the SEJPA. Only authorized employees or agents of the SEJPA shall have any right to operate said system and/or property in any manner. The owner's Recycled Water Site Supervisor, approved by the SEJPA, shall be responsible for the operation of the owners recycled water distribution systems, for the surveillance of all uses, and for the assessment of water quality as it relates to compliance with requirements of Regulatory Agencies.

2.10 Protection of Public Health

Recycled water facilities shall be operated in accordance with the San Elijo Joint Powers Authority Recycled Water Program: Inspection and Compliance Plan for Recycled Water Customers to prevent direct human consumption of recycled water and to minimize misting, ponding, and runoff. The Plan shall be implemented to minimize both public contact and discharge onto areas not under Customer control.

The SEJPA reserves the right to take any action with respect to the operation of the recycled water system and at such time as it deems proper to safeguard public health.

2.11 Authorized Uses

These Regulations limit the application of recycled water to irrigation, decorative impoundment, and construction use. Any other uses may be approved on a case-by-case basis by the SEJPA. The SEJPA may grant permission for other uses only after the appropriate Regulatory Agencies have granted such approvals as may be required.

2.12 Approved Use Areas

~~Preliminary Determination: Based upon the Preliminary Investigation and review of the application by the SEJPA, the SEJPA shall make preliminary determinations as to which applicants shall be reasonably and economically converted to the use of recycled water. Upon approval from the appropriate water purveyor, each Customer shall be notified of the basis for a determination that conversion to recycled water service will be feasible, as well as the proposed conditions and schedule for conversion.~~

~~Notice: The notice of the preliminary determination, including the proposed conditions and time schedule for compliance.~~

~~Objections; Appeals: The Customer may file a notice of objection with the SEJPA within (30) days of any notice of determination to comply is delivered or mailed to the customer, and may request reconsideration of the determination or modification of the proposed conditions or schedule for conversion. The objection must be in writing and specify the reasons for the objection. The preliminary determination shall be final if the customer does not file a timely objection. The Manager or his/her designee, shall review the objection with the objector, and shall confirm, modify, or abandon the preliminary determination.~~

Recycled water may only be used in areas approved by the SEJPA. Approval may be obtained only through the service application procedure contained in these Regulations. In all cases, approval of a use area by the SEJPA will be contingent upon complete satisfaction of the requirements of the applicable Regulatory Agencies.

2.13 Customer Complaints

Customer complaints concerning recycled water use that may involve public illness shall be reported to the County of San Diego Department of Environmental Health and the State Department of Health Services, if applicable, SEJPA ~~who~~ shall maintain a log of all customer complaints regarding recycled water.

2.14 Recycled Water User Permit Process

Upon a final determination by the SEJPA that a property shall be served with recycled water, or adoption of a condition of development approval requiring use or accommodation of the use of recycled water, the water customer, owner or applicant shall obtain a recycled water User Permit from ~~SEJPA~~ the water purveyor.

User Permit Conditions: The User Permit shall specify the design and operational requirements for the applicant's recycled water distribution facilities and schedule for compliance, based on the rules and regulations adopted by the SEJPA and shall require compliance with both the California Department of Health Services Wastewater Reclamation Criteria (see California Code of Administrative Regulations, Title 22), and requirements of the Regional Board.

Plan Approval: Plans for the recycled and potable water distribution systems for the parcel shall be reviewed by the SEJPA or its designee and Regulatory Agency and a field inspection conducted before the permit is granted.

User Permit Issuance: Upon approval of plans, the User Permit shall be issued by SEJPA ~~the water purveyor~~. Recycled water shall not be supplied to a property until inspection by the local regulatory agency, SEJPA or his designee determines that the applicant is in compliance with the permit conditions.

2.15 Connection ~~to~~ Potable Water

2.15.1 Temporary Connections to Potable Water System

In those areas where recycled water is not immediately available for use and an approved onsite recycled water system has been constructed, a temporary connection to the water purveyor's potable water system may be allowed with written approval from appropriate water purveyor. Only the water purveyor shall perform the work of making any connections to the potable water system. All temporary connections to the water purveyor's potable water system shall conform with all requirements specified within the water purveyor's and SEJPA's cross-connection control rules and regulations.

At the time when the SEJPA determines that recycled water is available, the SEJPA shall notify any user with a temporary connection of the availability of recycled water, and schedule a mutually acceptable time for making the conversion to recycled water. The SEJPA and the appropriate water purveyor will establish point of connection to the offsite facilities.

2.15.2 Permanent Connections to Potable Water System

The water purveyors serve domestic water to premises that also use recycled water. There shall be no cross-connections between the domestic water system and the recycled water system except through an approved air gap. The air gap facility shall be above ground and the air gap separation shall be at least two times the pipe diameter above the receiving rim. Shutdown tests shall be conducted pursuant to the required schedule to ensure there are no cross-connections between the domestic and the recycled water systems. Adequate pipe marking and signage shall be used to prevent unauthorized public contact. Adequate review and oversight of the existing and new recycled use areas shall be at least quarterly. A recycled water user supervisor shall be appointed and be responsible for the on-site use of recycled water. The on-site supervisor shall advise the SEJPA of any installation, operations and maintenance problems with the recycled water system. All cross-connection incidents shall be reported to the ~~SDHS-DWFOB~~ Appropriate Regulatory Agencies.

2.16 Design Approval

Prior to the construction of new facilities or the retrofit of existing facilities that will use or receive recycled water, the design of such facilities must be approved by the SEJPA and the California Department of Health Services, or the San Diego County Department of Environmental Health. A written approval shall be obtained only through the procedure contained in these Regulations. Approval shall be contingent

upon evidence that all applicable design requirements, including those contained within these Regulations, are satisfied.

2.17 Construction Inspection

The SEJPA, local regulatory agency or its authorized agents shall inspect the construction of new facilities and the retrofit of existing facilities that will use or receive recycled water to verify that they are constructed in conformance with the plans and these Regulations.

2.18 Final Inspection

Before service start-up of any facilities using recycled water, the installed system shall be tested by the County of San Diego Department of Environmental Health under design operating conditions to establish that the operation is in accordance with all applicable requirements, including those contained within these Regulations. Assuming all other requirements are satisfied, service start-up will be contingent upon successful operational testing.

2.19 Service Conditions

The SEJPA reserves the right to control and schedule the use of water, if in the opinion of the Manager or his designated representative control and scheduling are necessary to maintain acceptable working conditions in the recycled water distribution system.

2.20 Liability

The SEJPA assumes no responsibility for the maintenance and operation of all Customer-maintained recycled water systems beyond that which it retains with respect to violations of the Regulatory Agency requirements. The Customer assumes all liability and responsibility to the end that the SEJPA shall be held whole and blameless at all times in any claim resulting from matters involving quantities, quality, time or occasion of delivery, or any other phase of the maintenance, operation, and service of the Customer-maintained onsite facilities.

The owner agrees to indemnify, defend and hold harmless the SEJPA and its agents, employees, and assigns from and against all claim of any nature for loss, damage, or injury to all persons and property, arising out of any alleged defect in the recycled water or arising out of any operations and activities under a User Permit or otherwise in connection with provision of service.

2.21 Surveillance

It is the responsibility of the Customer to provide surveillance and supervision of on-site facilities in a manner that assures compliance at all times with these Regulations. Moreover, as a control check for on-site surveillance, the SEJPA shall regularly inspect the on-site systems and their operations for conformance with these Regulations as described in the Inspection and Compliance Plan. The SEJPA shall report any and all violations to the appropriate Regulatory Agencies in accordance with applicable procedures that have been established by law, code, permit, or practice.

2.22 Suspension aAnd Termination Of Recycled Water Service

Recycled water service may be suspended and/or terminated at any time by the SEJPA due to any one or more of the following:

1. Failure by a customer to adhere to the provisions of these Rules and Regulations;
2. For the protection of the public health, safety and welfare;
3. In order to protect recycled water facilities or make repairs;
4. For failure of the customer to pay for recycled water in accordance with these Rules and Regulations;
5. Refusal to install test, repair, or replace a required backflow prevention device;
6. Direct or indirect connection between the water purveyor's potable water system and the recycled water system;
7. Direct or indirect connection between the purveyor's recycled water system and a system or equipment containing contaminants;
8. Operations contrary to the aforementioned restrictions resulting in overspray into unapproved areas, excessive application rates or times, or improper fine grading of the soil, or improperly maintained drainage systems resulting in run-offs, or ponding due to run-offs on public rights-of-way or adjoining areas not approved for recycled water use.

If at any time during the construction or operation of facilities designed to use recycled water real or potential hazards are evidenced, the SEJPA reserves the right and has the authority to immediately terminate recycled water service in the interest of protecting the public health or other elements of the recycled water system. In the event that recycled water service is so terminated, the SEJPA may request that the appropriate water purveyor supply water to the affected facilities either temporarily or permanently from the potable water system.

2.23 Sanctions

Public Nuisance: The use of recycled water in any manner in violation of this ordinance or of any permit issued hereunder is hereby declared a public nuisance and shall be corrected or abated as directed by the Manager or his designee.

Injunction: The Regional Board may initiate enforcement action against any recycled water user who discharges recycled water in violation of any applicable discharge requirement prescribed by the Regional Board or in a manner which creates or threatens to create conditions of pollution, contamination or nuisance, as defined in Water Code Section 13050.

User Permit Revocation: In addition to any other statute or rule authorizing termination of water service, the Manager or his designee may revoke a permit issued hereunder if a violation of any provision of the rules and regulations is found to exist or if use of recycled water causes or threatens to cause a nuisance.

2.23.1 Runoff Conditions

Conditions that directly or indirectly cause a runoff outside of the approved use area, whether by design, construction practice, or system operation, are strictly prohibited.

2.23.2 Ponding Conditions

Conditions that directly or indirectly cause a ponding outside of or within the approved use area, whether by design, construction practice, or system operation, are strictly prohibited.

2.23.3 Windblown Spray Conditions

Spray irrigation with recycled water, other than disinfected tertiary recycled water, shall not take place within 100 feet of the property line of a residence or a place where public exposure could be similar to that of a park, playground, or school yard.

Conditions that directly or indirectly permit excessive windblown spray to pass outside of the approved use area, whether by design, construction practice, or system operation, are strictly prohibited.

2.23.4 Unapproved Uses

Use of recycled water for any purposes other than those explicitly approved in the currently effective user permit issued by the SEJPA and without the prior knowledge and approval of the appropriate Regulatory Agencies is strictly prohibited.

2.23.5 Cross Connections

Cross connections, as defined by the California Administrative Code, Title 17, resulting from the use of recycled water or from the physical presence of a recycled water service, whether by design, construction practice, or system operation, are strictly prohibited.

The SEJPA shall be responsible for the enforcement of the Rules and Regulations at the 22nd District Agricultural Association in the City of Del Mar; However, the cross-connection test upstream of the meters, meters are exclusive, shall be the responsibility of the City of Del Mar. Cross connection test downstream of the meter is the responsibility of the SEJPA and the City of Del Mar.

2.23.6 Unprotected Drinking Fountains

Any and all drinking fountains located within the approved use area designated by the currently effective user permit shall be protected by siting and/or structure from contact with recycled water, whether by windblown spray or by direct application through irrigation or other approved use. Lack of such protection, whether by design, construction practice, or system operation, is strictly prohibited.

2.23.7 Unprotected Public Facilities

Facilities that may be used by the general public, including but not limited to food establishments, eating surfaces and playground equipment, and located within the approved use area designated by the user permit, shall be protected by siting and/or structure from contact with recycled water, whether by windblown spray or by direct application through irrigation or other approved use. Lack of such protection, whether by design, construction practice, or system operation, is strictly prohibited.

2.23.8 Hose Bibbs

Use or installation of hose bibbs on any on-site system that presently operates or is designed to operate with recycled water, regardless of the hose bibb construction or identification, is strictly prohibited, [unless approved by the San Diego County Department of Environmental Health or State Department of Public Health.](#)

2.23.9 Fire Hydrants

Use or installation of fire hydrants on any on-site system that presently operates or is designed to operate with recycled water, ~~regardless of the fire hydrant construction or identification, is strictly prohibited.~~ [must be approved by the SEJPA and the San Diego County Department of Environmental Health.](#)

2.23.10 Unprotected Domestic Water Supply Well

Irrigation with disinfected tertiary recycled water shall not take place within 50 feet of any domestic water supply well unless all of the following conditions have been met:

1. A geological investigation demonstrates that an aquitard exists at the well between the uppermost aquifer being drawn from and the ground surface.
2. The well contains an annular seal that extends from the surface into the aquitard.
3. The well is housed to prevent any recycled water spray from coming into contact with the wellhead facilities.

4. The ground surface immediately around the wellhead is contoured to allow surface water to drain away from the well.
5. The owner of the well approves of the elimination of the buffer zone requirements.
6. Impoundment of disinfected tertiary recycled water shall not occur within 100 feet of any domestic water supply well. Lack of such protection, whether by design, construction practice, or system operation, is strictly prohibited.

Irrigation with, or impoundment of, disinfected secondary-2.2 or disinfected secondary-2.3 recycled water shall not take place within 100 feet of any domestic water supply well. Lack of such protection, whether by design, construction practice, or system operation, is strictly prohibited.

Irrigation with, or impoundment of, undisinfected secondary recycled water shall not take place within 150 feet of any domestic water supply well. Lack of such protection, whether by design, construction practice, or system operation, is strictly prohibited.

2.23.11 Recycled Water Storage

All recycled water storage facilities owned and/or operated by the users shall be protected against erosion, overland runoff, and other impacts resulting from a 100-year, 24-hour frequency storm unless the Regional Board Executive Officer approves relaxed storm protection measures for the facility. Lack of such protection, whether by design, construction practice, or system operation, is strictly prohibited.

All recycled water storage facilities owned and/or operated by the users shall be protected against 100-year frequency peak stream flows as defined by the San Diego County flood control agency unless the Regional Board Executive Officer approves relaxed storm protection measures for the facility. Lack of such protection, whether by design, construction practice, or system operation, is strictly prohibited.

2.23.12 Nutrient Loading

Combined nutrient loading from applied recycled water and applied fertilizer shall not exceed the nutrient demands of the landscape vegetation or agricultural crops.

Section 3

Requirements for Design and Operation

3.1 Design Requirements

3.1.1 On-site Irrigation Systems

3.1.1.1 Design Responsibility

The design of an on-site irrigation system that will use recycled water, and the preparation of plans and construction specifications, shall be under the responsibility of a landscape architect or engineer registered with the State of California.

3.1.1.2 Provisions for Recycled Water

In those areas where recycled water is not immediately available for use when the design area is ready for construction, the on-site recycled water irrigation system shall nevertheless be designed to use recycled water. Provisions shall be made and these Regulations followed to allow for connection to the recycled water distribution system when it becomes available. In the interim, potable water may be supplied to the on-site irrigation system through an approved temporary potable water connection.

An approved backflow preventer shall be required as long as the on-site irrigation system is using potable water. Only the SEJPA may authorize removal of said back-flow preventer and the SEJPA or its designee shall make the connection to the recycled water distribution system when recycled water becomes available. All points of connection to the SEJPA's facilities shall be determined by the SEJPA.

Although the SEJPA shall be responsible for the enforcement of the Rules and Regulations at the 22nd Agricultural Association in the City of Del Mar, only the City may authorize removal of said back-flow preventer and the City or its designee shall make the connection to the recycled water distribution system when recycled water becomes available. All points of connection to the City's facilities shall be determined by the City.

Notification of all action taken with regard to backflow prevention devices shall be made by the SEJPA to the San Diego County Department of Environmental Health and California Department of Health Services.

3.1.1.3 Design Capacity

The on-site irrigation system shall be designed to meet the peak moisture demand of all plant materials used within the design area. [Fertilizer application design rates shall include the nutrient loading from the recycled water so that the combined loading does not exceed the nutrient demands of the landscape vegetation or agricultural crops.](#)

3.1.1.4 Design Application Rates

The on-site irrigation system shall be designed to apply irrigation water in a manner compatible with the infiltration rates of the soil types within the approved use area. Evidence that infiltration rates have been assessed shall be included with the design. Where varying soil types are present to the extent that they cannot be adequately addressed by separate parts of the system, the design of the irrigation system shall be compatible with the lowest infiltration rate present.

[Combined nutrient loading from applied recycled water and applied fertilizer shall not exceed the nutrient demands of the landscape vegetation or agricultural crops.](#)

3.1.1.5 System Layout

The irrigation system shall be designed to prevent discharge onto areas that are not approved for use. Part-circle sprinklers shall be used adjacent to roadways and boundary lines to confine the discharge from the irrigation system to the design area.

The system design shall avoid spray patterns that include obstructions that tend to concentrate recycled water to produce ponding and/or runoff, such as spraying against rocks, abutments, and outlet structures.

3.1.1.6 System Control Devices

The system design shall include automatic system control devices that can be programmed to minimize the ponding, wind blown spray, and/or runoff of recycled water. These devices shall include automatic controllers, valves, and associated equipment. The devices shall be designed so that, if the current application program is producing any runoff, they can be readily reprogrammed on-site to prevent such occurrences.

At locations where an existing irrigation system will be converted to recycled water, and there is less than ten feet horizontal and one foot vertical separation between the irrigation piping and nearby potable water piping, the irrigation system, near its point of connection to the recycled water system, shall be equipped with an automatic valve that vents the irrigation system when it is not in use. The automatic valve shall be controlled by the Customer's irrigation control system. The automatic valve design and construction shall be subject to the review and approval of the SEJPA, the San Diego County Department of Environmental Health, and the California Department of Health Services.

3.1.2 Construction Water Facilities

3.1.2.1 Service Connections

Service connections for the construction use of recycled water may be provided by the SEJPA at locations as convenient as practicable to the Customer but at the discretion of the SEJPA. The recycled water construction service shall be approved by the San Diego County Department of Environmental Health. The service shall include a

valved connection to a recycled water distribution main and water meter whose capacity shall be determined by the SEJPA from information supplied by the Customer in his user permit application. The SEJPA shall make the connection to the main and install the recycled water meter.

3.1.2.2 Transmission Facilities

Transmission lines for conveying recycled water from the metered service connection to a storage container or water distribution vehicle shall be of adequate size and structural integrity to ensure that leaks or ruptures will not occur in the course of normal construction activity. The Customer shall provide these lines. Lines crossing construction roadways or other areas receiving regular vehicular traffic must be buried to a depth of at least eighteen (18) inches. Rigid pipe able to withstand the planned vehicular loads shall be employed for such installations. Distance to potable water lines shall comply with State Health codes.

3.1.2.3 Storage Facilities

Storage tanks for the holding of recycled water and the supply to distribution vehicles shall be of adequate design and structural integrity to ensure that leaks or ruptures will not occur in the course of normal use. These tanks or ponds shall be provided by the Customer and shall be fenced. All storage ponds and any storage tanks not supported more than six feet above ground-level shall be contained within a fence or other enclosure that will restrict access by the General Public to these facilities at all times when Operations Personnel are not present. Outlet control with positive shut-off shall be provided at each storage facility.

3.1.2.4 Distribution Vehicles

Vehicles used for distributing recycled water for soil compaction and dust control shall be provided with adequate tanks and plumbing systems to ensure that leaks and ruptures will not occur in the course of normal use. Control valves shall be provided such that the recycled water can be applied in a controlled fashion on the approved use area and completely retained during transit in all other areas. Spray heads or nozzles shall be provided and configured such that the discharge is uniformly distributed and runoff, ponding, or windblown spray conditions prevented.

3.2 Operation Requirements

3.2.1 On-site Irrigation Systems

3.2.1.1 Supervision

The operation and surveillance of on-site irrigation systems shall be under the management of the (Recycled Water Site Supervisor) designated by the Customer. The Recycled Water Supervisor shall obtain instruction in the use of recycled water from an institution approved by the State and County Health Departments. This supervisor or his representative shall be available during normal working hours at an address listed with the SEJPA for the purpose of hosting an inspection tour or for

discussing operational aspects of the system. The Recycled Water Site Supervisor or his/her representative shall be available via telephone at a number listed with the SEJPA for emergency off-hours contact.

3.2.1.2 Personnel Training

It shall be the responsibility of the Recycled Water Site Supervisor to ensure that all Operations Personnel are trained in and familiarized with the use of recycled water, and are familiar with all pertinent information contained in these Regulations and those applicable portions of the California Administrative Code. The SEJPA or its designee upon request of the Recycled Water Site Supervisor shall supply this information. The Recycled Water Site Supervisor in the certification form for recycled water service shall attest to that the training will be provided.

3.2.1.3 On-site Information

The Recycled Water Site Supervisor shall be responsible for furnishing the Operations Personnel recycled water rules and regulations, irrigation system layout map, system operating instructions, maintenance instructions, controller charts, and record drawings to ensure proper operation in accordance with the irrigation system design, Inspection and Compliance Plan, and these Regulations. At least one complete set of this information shall be kept on site or in the nearest field office or maintenance building established by the Recycled Water Site Supervisor. The Recycled Water Site Supervisor retains the responsibility of properly disseminating this information to all appropriate Operations Personnel.

3.2.1.4 On-Site Monitoring & Inspection

The SEJPA or representatives of the various Regulatory Agencies may make inspection of the on-site irrigation system and the approved use area being served at any time. The Customer, the Recycled Water Site Supervisor, and any Operations Personnel are obligated to cooperate with those making the inspection and to assist in the performance of operational tests as requested.

3.2.1.5 Irrigation Application Rates

Recycled water shall be applied at a rate that does not exceed the infiltration rate of the soil. When the application rate exceeds the infiltration rate of the soil, automatic system control devices shall be utilized and programmed to minimize the ponding and/or runoff of irrigation water. If runoff or ponding occurs before the landscape's water requirements are met, the automatic controls shall be reprogrammed with additional watering cycles to meet the requirements and prevent runoff.

[Combined nutrient loading from applied recycled water and applied fertilizer shall not exceed the nutrient demands of the landscape vegetation or agricultural crops.](#)

3.2.1.6 Confinement of Irrigation

The on-site irrigation system shall be operated to prevent discharge onto areas that are not approved for use. Over-spray resulting from attempts to reach remote portions of the approved use area shall not be practiced. This situation shall be rectified by appropriate design corrections to the system layout.

3.2.1.7 Periods of Operation

To the extent practicable, the operation of the irrigation system shall be during periods of minimal use of the approved use area by the General Public. Such periods of operation shall remain within any general period of recycled water irrigation operation specified by the SEJPA. No sprinkler system shall be allowed to operate for a time longer than the landscape's water requirements. The intent is to control and limit run-off and ponding. Hours of irrigation with recycled water are from 10:00 p.m. to 6:00 a.m. as allowed by the SEJPA.

3.2.1.8 Maintenance

A preventative maintenance program designed to ensure the continued operation of all system elements within the requirements of these Regulations shall be evidenced by the Recycled Water Site Supervisor and open to inspection by the SEJPA.

3.2.1.9 Fertilizer Application Rates

Recycled water provided by the District contains dissolved nutrients that can help meet nutrient demands of irrigated vegetation. The District will provide the Customer with information that quantifies concentrations of nitrogen and phosphorus within the recycled water. Customers shall adjust fertilization application rates to take into account the available nutrients within the recycled water to ensure that nutrient loadings to use areas do not exceed the nutrient demands of the landscape vegetation or agricultural crops.

3.2.2 Construction Water Facilities

3.2.2.1 Supervision

The operation and surveillance of on-site irrigation systems shall be under the management of the (Recycled Water Site Supervisor) designated by the Customer and approved by the SEJPA. This supervisor or his representative shall be available via telephone at a number listed the SEJPA for contact during working hours.

3.2.2.2 Personnel Training

It shall be the responsibility of the Recycled Water Site Supervisor to ensure that all Construction and Operations Personnel are trained in and familiarized with the use of recycled water, and are familiar with all pertinent information contained in these Regulations and those applicable portions of the California Administrative Code. The SEJPA or its designee upon request of the Recycled Water Site Supervisor shall supply

this information. The Recycled Water Site Supervisor in the certification form for recycled water service shall attest to that the training will be provided.

3.2.2.3 On-Site Information

The Recycled Water Site Supervisor shall be responsible for furnishing the Construction and Operations Personnel recycled water rules and regulations, irrigation system layout map, system operating instructions, maintenance instructions, controller charts, and record drawings to ensure proper operation in accordance with the irrigation system design, Inspection and Compliance Plan, and these Regulations. At least one complete set of this information shall be kept on site or in the nearest field office or maintenance building established by the Recycled Water Site Supervisor. The Recycled Water Site Supervisor retains the responsibility of properly disseminating this information to all appropriate Operations Personnel.

3.2.2.4 On-site Inspection

The SEJPA or representatives of the various Regulatory Agencies may make inspection of the on-site irrigation system and the approved use area being served at any time. The Customer, the Recycled Water Site Supervisor, and any Operations Personnel are obligated to cooperate with those making the inspection and to assist in the performance of operational tests as requested.

3.2.2.5 Application Control

Recycled water used for the purpose of soil compaction and dust control shall not be stored or applied in a manner that causes runoff, ponding or windblown spray conditions. If such conditions occur, the method of application shall be altered to correct them and prevent any and all further ponding or runoff. Control valves on the water distribution vehicles and other controlling devices shall be properly employed to prevent the application of recycled water outside the approved use area onto surfaces including but not limited to street pavements, sidewalks and drainage courses.

3.2.2.6 Periods of Operation

The periods of operation of the recycled water facilities shall be subject to regulation by the SEJPA in accordance with the needs of the entire recycled water distribution system.

3.2.2.7 Maintenance

A preventative maintenance program designed to ensure the continued operation of all system elements within the requirements of these Regulations shall be evidenced by the Recycled Water Site Supervisor and open to inspection by the SEJPA.

3.2.2.8 Reuse of Equipment

Any equipment, such as tanks, temporary piping valves, and portable pumps, that has been used with recycled water shall be cleaned and disinfected before removal

from the approved use area to another job site. This disinfection and cleaning shall ensure the protection of the public health in the event of any reuse of such equipment with higher quality water. The SEJPA, the County of San Diego Department of Environmental Health Services, and the California Department of Health Services shall approve methods of disinfection.

3.3 Submittals and Records

3.3.1 On-site Irrigation Systems

3.3.1.1 Preliminary Investigation

The Applicant shall meet with the SEJPA at the earliest possible date to determine whether the property to be irrigated is within the Service area. At this time, the availability of existing recycled water distribution lines can also be reviewed. It shall be the responsibility of the Applicant to determine how the SEJPA can serve the proposed area. This determination shall be submitted to the SEJPA at least 30 calendar days prior to the date on which feasibility acceptance is desired. Feasibility acceptance must be obtained prior to making formal application for recycled water service.

3.3.1.2 System Design Documents

The following information shall be submitted by the Applicant for approval as indicated prior to commencing any construction:

Plans and Specifications - Three copies of the plans and specifications, signed by the design engineer or landscape architect, for the construction of the on-site irrigation system, shall be submitted to the SEJPA for review and approval. Only that section of the specifications dealing with the materials for the irrigation system need be submitted. As part of this submittal, a construction cost estimate for the subject facilities shall be provided. Two copies of the plans and specifications as approved by the SEJPA shall be forwarded to the County of San Diego Department of Environmental Health for their review and approval.

Meter Criteria - The following information shall be provided, either on the plans or as a separate submittal, for every irrigation system meter desired.

- a) Meter size (inches)
- b) Gross area served through the irrigation meter (square feet or acres).
- c) Peak flow through the meter (gpm)
- d) Estimate of the yearly water requirement through the meter (acre-feet).
- e) Design pressure at the meter (psi).

Irrigation Criteria - A legend showing the pertinent data for the materials used in the system shall be recorded on the plans. The legend shall include a pipe schedule listing pipe sizes and materials of construction, valve types, and the following information for each type of sprinkler head:

- a) Manufacturer and model number.
- b) Sprinkler radius (feet).
- c) Operating pressure (psi).
- d) Flow (gpm).
- e) Sprinkler pattern.

Soils Evaluation - A statement shall be included on the plans which lists major soil types and their respective average infiltration rates, and that relates the location of these soil types to the irrigation system layout.

Call-Outs - Exterior drinking fountains, eating areas, food concessions, wells and other public facilities shall be shown and called out on the plans. If no exterior drinking fountains, eating areas, food concessions, wells or other public facilities are present in the design area, then it shall be specifically stated on the plans that none of these facilities exist in the design area.

Standard Notes - Standard notes that are to be listed on all plans are as follows:

- 1. All work shall be done in accordance with the SEJPA's Rules and Regulations.
- 2. Drinking fountains shall be protected from spray of recycled water. Best management practices shall be used to minimize recycled water encroachment on public facilities such as picnic tables, BBQ's, playgrounds, sand lots, etc.
- 3. The Inspection and Compliance Plan shall be used to eliminate or control to the best extent possible ponding, run-off, over-spray and misting.
- 4. Hose bibs are strictly prohibited.
- 5. On-site cross connections between recycled water lines and potable water lines are strictly prohibited.
- 6. No substitutions of pipe materials will be allowed without prior approval of the SEJPA.

7. All mainline pipes and laterals shall have warning tape per SEJPA's Rules and Regulations.
8. Hours for irrigation with recycled water are from 10:00 p.m. to 6:00 a.m. Local authority may modify the hours for irrigation with disinfected tertiary recycled water. Irrigation during public use periods with disinfected tertiary recycled water shall be under the supervision of the designated Recycled Water Site Supervisor. Irrigation with water of a lesser quality than disinfected tertiary recycled water is strictly prohibited.
9. Burial of all wiring and piping shall meet SEJPA's Rules and Regulations.
10. Non-designated use areas shall be protected from contact with recycled water, whether by windblown spray or by direct application through irrigation or other use. Lack of protection, whether by design, construction practice or system operation, is strictly prohibited.
11. Irrigation heads shall be relocated or adjusted to prevent over-spraying on sidewalks, streets and non-designated use areas.
12. Recycled water quick coupling valves shall be of a type designed for the use on recycled water distribution systems (spikes not interchangeable with potable water quick coupler spikes) per SEJPA's Rules and Regulations.
13. On recycled water systems, all appurtenances (sprinkler heads, valve boxes, etc.) shall be color-coded purple pantone per AWWA guidelines and Section 116815 of the California Health and Safety Code.
14. All irrigation pipes shall be stenciled with the warning, 'NON-POTABLE or RECYCLED WATER,' color-coded (purple pantone) and laid with warning tape and stenciling oriented toward the top of the trench per the SEJPA's Rules and Regulations.
15. On new on-site systems (post-meter), potable water, constant pressure recycled water, and sewer lines should be placed a minimum of four (4) feet apart or as directed by the project engineer and/or regulatory agency. Measurements shall be between facing surfaces, not pipe centerlines.
16. Constant pressure recycled water lines shall cross at least twelve (12) inches below potable water lines and shall maintain at least twelve (12) inches crossing separation between other utilities.
17. If a constant pressure recycled water line must be installed above a potable water line or less than twelve (12) inches below a potable water line, then the

recycled water line shall be installed within an approved protective sleeve as per the SEJPA's Rules and Regulations.

18. Developer/contractor shall conduct a cross-connection test and coverage test as directed by the SEJPA and/or the San Diego County Department of Environmental Health prior to any use of recycled water.
19. Either the SEJPA and/or the San Diego County Department of Environmental Health shall do the required cross connection inspection. Copies of inspection reports will be forwarded to the non-inspecting party.
20. The design and locations proposed for recycled water "DO NOT DRINK - RECYCLED WATER" signs shall be called out on the plans. Each sign shall display an international warning symbol "DO NOT DRINK."
21. The SEJPA shall be notified at least 72 hours prior to the start of any construction.
22. Record drawings shall be submitted and approved by the SEJPA before regular service is started.
23. It shall be the responsibility of the applicant to submit the drawings and specifications as approved by the SEJPA, to any agency having jurisdiction over such projects, for their review and to obtain all required permits.
24. When recycled water becomes available, a Recycled Water Supervisor shall be designated in writing. This individual shall be familiar with plumbing systems within the property, with the basic concepts of backflow/cross connection protection, the recycled purveyor's rules and regulations, and the specific requirements of a recycled water system. Copies of the designation, with contact phone numbers shall be provided to the SEJPA and/or the San Diego County Department of Environmental Health.

In case of emergency contact _____ at _____
name phone number

After hours contact _____ at _____
name phone number

25. All public and private potable water mains and any water wells within the recycled water project shall be shown on the plans.
26. Call out on the plans if there are or are not drinking fountains and/or designated outdoor eating areas on the site.

27. Educate all maintenance personnel on a continuous basis of the presence of recycled water. Personnel must be informed that recycled water is meant for irrigation purposes only, and is not approved for drinking purposes, hand washing, cleaning of tools, etc.
28. A physical separation shall be provided between adjacent area irrigation with recycled water and potable water. Separation shall be provided by distance, concrete mow strips or other approved methods.

3.3.1.3 Record Drawings and Documents

Record drawings shall be submitted by the design engineer or landscape architect to the SEJPA and Regulatory Agencies before a request for regular service start-up is made. The following shall apply:

Recording Changes - All changes in the work constituting departures from the original design drawings, including changes in both pressure and nonpressure lines, shall be accurately recorded on one set of drawings. Upon completion of each increment of work, all such information and dimensions shall be transferred to the drawings. The changes and dimensions shall be recorded in a legible and workmanlike manner. All changes to reproducible drawings shall be made in ink (no ballpoint pen). Eradicating fluid shall be used when redoing drawings.

Dimensioning - All dimensions shall be taken from two permanent points of reference such as buildings, monuments, sidewalks, curbs, or pavements. Locations shown on as-built drawings shall be kept day by day as the project is being installed.

Specific Call-Outs - The locations and depths of the following items shall be shown:

- a) Points of connection.
- b) Routing of sprinkler pressure lines.
- c) Gate valves.
- d) Sprinkler control valves.
- e) Quick coupling valves.
- f) Routing of control wires.
- g) Control stations.
- h) Points of line serving.
- i) Backflow control devices, including type of device.

As-Built Drawings - For the purpose of reference, as-built drawings shall be maintained on site at all times.

Control charts shall be prepared by the design engineer or landscape architect and submitted with the record drawings to the SEJPA and regulatory agencies before formal request for service start-up is made. The chart submittals shall include the following:

Chart Requirement - One controller chart shall be provided for each automatic controller supplied showing the system area covered by the controller. The chart shall be sized as large as the controller door will allow.

Chart Coloring - Each chart shall be a black-line print with a different color used to show the area of coverage for each station.

Chart Packaging - After approval, all charts shall be hermetically sealed between two pieces of plastic, each piece being a minimum of 10 mils thick and retrained at the controller site.

3.3.2 Construction Water Facilities

3.3.2.1 Preliminary Investigation

The Applicant shall meet with the Purveyor and the SEJPA at the earliest possible date to determine whether the property to be served is completely within the service area and the availability of existing recycled water distribution lines can also be reviewed. Feasibility acceptance must be obtained prior to making formal application for recycled water service.

Section 4

Specifications for Construction

4.1 General Conditions

All construction work for on-site recycled water facilities shall be in conformance with the County of San Diego, California, Department of Environmental Health Standard Specifications and Standard Drawings except as herein modified. The Standard Specifications shall be the latest edition of Standard Specifications for Public Works Construction, and supplements thereto, as specified by the County of San Diego, California, Department of Environmental Health. The Standard Drawings shall be the latest edition of the San Diego Regional Standard Drawings, including supplements.

4.1.1 Trade Names or Equals

The Contractor shall be permitted to supply any of the specified materials or to offer equivalent materials in accordance with the Standard Specifications.

4.1.2 Interpretation of Specifications and Detail Drawings

Interpretation of specifications shall be in accordance with the Standard Specifications.

4.1.3 Permits and Licenses

Except as otherwise provided, the Contractor shall procure all permits and licenses, pay all charges and fees, and give all notices necessary and incidental to the due and lawful prosecution of the work.

4.1.4 Connections to Existing Facilities

The Contractor shall not make a connection to existing facilities or interrupt recycled water service unless it has been approved by the SEJPA. If it becomes necessary to interrupt service to an existing system, this interruption shall be done at a time determined by the SEJPA.

4.1.5 Personal Liability

The SEJPA, nor any other officer, employee or authorized agent shall be personally responsible for any liability arising out of the work performed. The Owner and Contractor shall carry insurance policies necessary to indemnify the SEJPA, and any officer, employee or authorized agent against any liabilities caused solely by action of the Owner, his agents, including the Contract.

4.1.6 Loss and Damage

The San Elijo Joint Powers Authority shall be answerable or accountable in any manner for any loss or damage that may happen to the work or any part thereof; or for any material or equipment used in performing the work; or for injury or damage to any person or persons, either workmen or the public; or for damage to adjoining

property from any cause whatsoever during the progress of the work or at any time before final acceptance.

4.1.7 Legal Responsibility

The Contractor shall keep himself fully informed of all laws, ordinances, and regulations that in any manner affect those engaged or employed in the work or the materials used in the work, or that any way affect the conduct of the work, and of all such orders and decrees of bodies or tribunals having any jurisdiction or authority over the same. If any discrepancy or inconsistency is discovered in the plans, drawings, specifications or other documents in relation to any such law, ordinance, regulations, order or decree, the Contractor shall forthwith report the same to the SEJPA in writing. The Contractor shall observe and comply with and shall cause all of his agents and employees to observe and comply with all such existing and future laws, ordinances, resolutions, regulations, orders and decrees, and shall protect and indemnify the SEJPA and all of their officers and agents against any claim or liability arising from or based on the violation of any such law, ordinance, regulation, order or decree, whether by himself or his employees. The Contractor shall also indemnify and save the SEJPA, their officers, employees or authorized agents harmless from all costs, losses, expenses, damages, attorney's fees, and other costs of defense that the SEJPA may incur with respect to or on account to the work, and with respect to or on account of the work, and with respect to the failure, neglect or refusal of Contractor to faithfully perform the work and all of Contractor's obligations under the contract. Such costs, expenses, and damages include all costs incurred by the SEJPA to defend against any claims, stop notices or lawsuits based thereon in which the SEJPA are made a party.

The Contractor shall observe the rules and regulations of the State of California, Department of Industrial Relations, Division of Industrial Safety and, in particular, rules and regulations relating to shoring of trenches and excavations. All work shall be done in accordance with all directives, provisions, and requirements pertaining to the method and manner of performing the work, in accordance with CAL-OSHA's latest amendment or revision.

4.1.8 Inspection Authority

The SEJPA or its agents shall at all times have access to the work during construction and shall be furnished with such information as it may desire regarding the progress, workmanship, and character of materials used in the work.

The SEJPA or its agent shall have the authority to suspend the work wholly or in part for such time as it may deem necessary due to the failure on the part of the Contractor to carry out orders given or to perform any provisions of the plans or specifications. The Contractor shall immediately comply with the written order of the SEJPA to suspend the work wholly or in part. The work shall be resumed when methods or defective work are corrected as ordered and approved in writing by the SEJPA.

Failure to comply with requests of the SEJPA may prevent the release of the entire project.

4.1.9 Connections to Existing SEJPA Facilities

The applicant shall not make a connection to existing SEJPA facilities or interrupt recycled water service in any portion of the SEJPA facilities unless it has been approved by the SEJPA. If it becomes necessary to interrupt service to an existing system, this interruption shall be done at a time determined by the SEJPA under the SEJPA's direction and inspection.

When converting an existing potable water pipeline to recycled water usage, the water pipeline shall be accurately located and tested in coordination with the SEJPA and the regulatory agencies, and the necessary actions taken to bring the water pipeline and appurtenances in compliance with the Rules and Regulations. If the existing pipeline meets approval of the SEJPA and the regulatory agencies, except for the pipe identification, the pipelines shall be approved for recycled water service. If verification of the existing pipeline is not possible, the pipeline shall be uncovered, inspected, and identified prior to use. However, all replacements of an offsite distribution and/or delivery system connected to a recycled water irrigation system shall be colored-coded for identification in accordance with the provisions of those Rules and Regulations.

4.2 Materials of Construction

4.2.1 On-site Irrigation Systems

Materials of construction for irrigation systems shall be in accordance with the requirements of Section 212-2 of the Standard Specifications except as herein modified.

4.2.1.1 Piping

All piping installed in on-site irrigation systems shall be of adequate class as specified by the design agent and purple pantone in color.

4.2.1.2 Valves

Quick coupling valves shall not be compatible with potable water quick coupling devices and shall contain appropriate recycled water verbiage and "do not drink-recycled water" symbol. Quick coupling valves shall conform to the following:

Rating - Quick Coupling Valves shall be 3/4-inch or 1-inch nominal size with brass construction and shall be designed for minimum application of water.

Cover - The cover shall be permanently attached to the quick coupling valve. It shall be of rubber or vinyl construction and purple pantone in color.

Other valves shall be of the type and manufacture shown on the plans or approved equal. All underground gate valves three inches and smaller may be furnished with either operating nuts or handwheels.

4.2.1.3 Valve Boxes

All remote control valves, gate valves, and pressure relief valves shall be installed in suitable valve boxes, complete with locking and hinged cover. All shall be Ametek, Brooks, Fraser, Christy, or approved equal. Each shall be marked with "RW" to indicate the use of recycled water and with "PRV," "GV," "BV," or "RCV" to indicate type. Station numbers for control valves shall be stenciled in white on the purple pantone valve cover. New valve box covers shall be purple pantone in color and contain appropriate recycled water verbiage and "do not drink-recycled water" symbol.

4.2.1.4 Irrigation Heads

All on-site irrigation (sprinkler) heads shall conform to the following:

Rating - Sprinkler heads shall be the types and sizes with the radius of throw, pressure, discharge, and any other designations, as indicated on the plans and shall be designed for minimum application of water.

Manufacture - All heads of a particular type of function in the system shall be of the same manufacture and shall be marked with the manufacturer's name and identification in such a position that they can be identified without being removed from the system.

Risers - All sprinkler risers shall be as shown on the plans.

Substitutions - Any substitutions for items specified on the plans must be submitted to the design engineer for approval.

4.2.1.5 System Control Devices

All on-site irrigation controllers and appurtenances shall conform to the following:

Type - Automatic controllers shall be of the type and manufacturer shown on the plans or approved equal.

Each controller shall be capable of three repeats daily.

Wiring - All control and supply wiring shall conform to local electrical codes.

4.2.2 Construction Water Facilities

4.2.2.1 Piping

All piping employed for the transmission of recycled water for construction purposes shall be in serviceable condition and free from leaks and structural faults. All joints shall be structurally sound and free from leaks.

4.2.2.2 Valves

All valves employed with facilities using recycled water for construction purposes shall be in serviceable condition, provide positive shut-off, and be free from leaks.

4.2.2.3 Storage Tanks

All storage tanks used for recycled water, whether fixed or mounted on distribution vehicles, shall be structurally sound and free from leaks.

4.3 Methods of Construction

4.3.1 On-site Irrigation Systems

Methods of construction for on-site irrigation systems shall be in accordance with the requirements of Section 308-5 of the Standard Specifications except as herein modified.

4.3.1.1 Valve Installations

All on-site valves shall be installed in accordance with the following specifications:

Location - Piping systems shall be supplied with valves at all points shown on the drawings or specified herein, arranged to give complete regulating control throughout.

Size - Valves shall be the full size of the line in which they are installed unless otherwise indicated.

Adjustment - Remote control valves shall be adjusted so that the most remote sprinkler heads operate at the pressure recommended by the head manufacturer. Remote control valves shall be adjusted so a uniform distribution of water is applied by the sprinkler heads to the planting areas for each individual valve system.

Clearance - Quick coupling valves that are part of the initial installation shall be set approximately 12 inches from walks, curbs, headerboards, or paved areas where applicable. Vertical positioning of quick coupling valves shall be such that the sleeve tops will be flush with settled finish grade as determined after the turf is established.

Method - All valves shall be installed as shown in details and in accordance with manufacturer's recommendations.

Valve Boxes - Valve boxes shall be set 1/4 inch above the designated finish grade in lawn areas and two inches above finish grade in ground cover areas. Valve boxes installed near walks, curbs, headerboards and paving shall abut those items. The top surfaces shall be flush with items listed above. Pea gravel shall be installed in the base of each valve box.

Markers - Valve markers shall be used in play field areas, with 2-inch PVC pipe leading to each underground valve box. Valve markers shall be as manufactured by Rainbird or equivalent with locking top. Control station numbers shall be placed on the underside of each control valve marker.

4.3.1.2 System Control Device Installations

All on-site irrigation controllers and electrical appurtenances shall be installed in accordance with the following specifications:

Location - Each automatic controller shall be installed at the approximate location shown on the plans. All pedestal mounted controllers shall be mounted on a suitable concrete base.

Power Supply - All local and applicable codes shall take precedence in the furnishing and/or connecting of 110-volt electrical service to the controller.

Control Wiring - The installation of all electrical equipment and control wiring shall comply with local and state codes and be performed by those skilled and licensed in the trade. Unless the governing code specifies otherwise, low voltage control wire may be installed by the sprinkler irrigation contractor when code allows. A minimum of 18-inch coverage shall be provided over low voltage leads.

Connections and Splicing - Connecting and splicing of wire at valves shall be made using connectors, Scotchpact or equal.

4.3.1.3 Separation from Other Utilities

Separation between on-site recycled water lines and sanitary sewers and potable water lines shall be established upon installation in accordance with the latest requirements set forth by the State Department of Health Services and San Diego County Department of Environmental Health Services.

4.3.2 Construction Water Facilities

4.3.2.1 Laying Pipe

Recycled water lines laid below grade as required by design shall be buried to a depth of at least eighteen (18) inches. Pipe trenches shall be backfilled with clean material containing no rocks and debris that can damage the pipe.

Recycled water lines laid above grade shall be protected from thrust motion if such protection is determined to be required by the SEJPA. To achieve such protection,

metal stakes with wire lashes shall be installed at all bends, valves, and dead ends in the pipeline. Alternative methods of protection from thrust motion may be approved by the SEJPA.

4.3.2.2 Valve Installations

All valves installed along the recycled water transmission pipeline and not attached to a rigid structure shall be protected from thrust motion if such protection is determined to be required by the SEJPA. To achieve such protection, metal stakes with wire lashes shall be installed at all such valves. Alternative methods of protection from thrust motion may be approved by the District.

4.3.2.3 Storage Tank Installations

All recycled water storage tanks shall be erected only on level ground. Provisions shall be made to prevent differential settling of the tank supporting structure either because of moisture accumulation or poor underlying soil conditions.

4.4 Inspection

4.4.1 On-site Irrigation Systems

4.4.1.1 Obligations

The inspection of the work shall not relieve the Contractor of any of his obligations to complete the work as prescribed by the applicable specifications. Defective work shall be made good, and unsuitable materials may be rejected notwithstanding the fact that such defective work and unsuitable materials have been previously overlooked by the Inspector and accepted. The installation and inspection of unsuitable materials shall not be construed as acceptance, and modification to these specifications shall only be made in writing.

4.4.1.2 Construction Schedule

The Contractor shall submit a schedule outlining his proposed construction operation. Reception of this submittal shall be acknowledged by the applicable local authorities and shall initiate the construction inspection process. The Contractor shall give the SEJPA at least 72 hours' notice before the desired time of starting work.

Whenever the Contractor varies the period during which work is carried on each day or deviates from the schedule, he shall give due notice to the Inspector so that proper inspection may be provided. Any work done in the absence of the Inspector shall be subject to rejection.

4.4.1.3 Notification and Approvals

All work shall be subject to inspection shall be left open and uncovered until the installation is approved by the Inspector. No pipe, valves, fittings or other materials shall be installed until inspected and approved by the Inspector. All installations that are to be backfilled shall be inspected and approved by the Inspector prior to backfilling; and the Contractor shall give due notice to the Inspector in advance of

backfilling so that proper inspection may be provided. Unless the Inspector expressly states otherwise, 72 hours' notice shall be given by the Contractor in advance of any and all inspection requirements, whether for materials or construction work.

The SEJPA may request that the project engineer or landscape architect certify that all work was completed per the approved plans in lieu of the SEJPA inspection.

4.4.1.4 Inspection Intervals

The Contractor shall not proceed with any subsequent phase of work until the previous phase has been inspected and approved by the Inspector. Inspection shall be made on a continuous basis and shall specifically include, but not be limited to, the following intervals of work:

- a) Reception of all materials to work site prior to any installation.
- b) Trench excavation and bedding prior to placement of the pipe fittings or structures.
- c) Placing of pipe, fittings and structures.
- d) Placing of backfill and compaction and/or consolidation of backfill within the pipe zone.
- e) Placing the remainder of backfill and performing necessary backfill, compaction, and testing as required herein.
- f) Testing and inspection after all compaction and backfill requirements are achieved and prior to paving.

4.4.1.5 Final Inspection

Following the completion of all construction work and the submittal and approval of record drawings, the Contractor shall request final inspection of the work. This request shall include the scheduling of the operational testing.

4.4.2 Construction Water Facilities

4.4.2.1 Obligations

The inspection of the work shall not relieve the Contractor of any of his obligations to install the facilities as prescribed by the applicable specifications. Defective work shall be make good, and unsuitable materials may be rejected notwithstanding the fact that such defective work and unsuitable materials may have been previously overlooked by the Inspector and accepted. The installation and inspection of unsuitable materials shall not be construed as acceptance, and modification to these specifications shall only be made by the SEJPA in writing.

4.4.2.2 Construction Schedule

The Contractor shall give the SEJPA at least 72 hours' notice before the desired time of starting installation work.

4.4.2.3 Notification and Approvals

All work shall be subject to inspection by the SEJPA. No pipe, valves, fittings or other materials shall be placed into operation until inspected and approved by the Inspector. Unless the SEJPA expressly states otherwise, 72 hours' notice shall be given by the Contractor in advance of any and all inspection requirements, whether for materials or installation work.

4.4.2.4 Final Inspection

The Contractor shall request final inspection of the work. Final inspection shall include a visual examination by the Inspection and an operational leak test of all on-site facilities in the Inspector's presence.

4.5 Review and Testing

4.5.1 On-site Irrigation Systems

4.5.1.1 Materials

The Contractor shall furnish the SEJPA, or its agent, such information as it may desire regarding the character and quality of materials used. When requested by the Regulatory Agent or SEJPA, the Contractor shall submit a certification that the product meets the requirements of these specifications.

All pipe and accessories shall be carefully inspected by the Contractor for damage in transit. Any damaged pipe or fittings delivered and unloaded at trench-side shall be rejected and removed by the Contractor from the site of the work.

4.5.1.2 Installed Piping Systems

New piping systems shall be subject to a hydrostatic pressure test administered by the Inspector with the cooperation of the Contractor. Before testing, the pipe shall be backfilled or center-loaded to hold the pipe in place while testing. The water necessary to maintain this pressure shall be measured through a meter or other means satisfactory to the Inspector. The leakage shall be considered as the amount of water entering the pipe during the test, less the measured leakage through valves and bulkheads. Any noticeable leaks shall be stopped and any defective pipe shall be replaced with new sections. The Regulatory Agencies shall establish the criteria by which the leakage is determined to be excessive and unacceptable.

4.5.1.3 Operational Testing

Prior to final acceptance by the Regulatory Agencies, all on-site irrigation systems will be required to successfully pass a cross connection and coverage test as administered by the Inspector. The cross connection and coverage test shall be requested by the

Regulatory Agencies only after all other construction requirements are satisfied by the Customer and other inspection procedures completed. The test shall be conducted in the presence of representatives from the Regulatory Agencies, the Owner or Customer, the Engineer and the Contractor. The scheduling of these tests shall be the responsibility of the Customer after notification from the Engineer to conduct such tests.

The system or portions of the system in turn shall be placed into operation and the following items examined:

- a) Cycling of the program for the automatic controllers.
- b) General coverage of the irrigation pattern.
- c) All aspects of the irrigation conditions, including tendencies toward windblown spray, runoff and ponding.
- d) Required protection of all public facilities present in the approved use area.
- e) Cross-connection control shut down test.

Any required corrections shall be noted in the form of a punch list and submitted to the Customer by the Regulatory Agencies for correction by the Contractor. Regular service start-up shall not be authorized until all corrections are made to the satisfaction of the Regulatory Agencies.

4.5.2 Construction Water Facilities

4.5.2.1 Materials

The Contractor shall furnish the SEJPA such information as it may desire regarding the character or quality of materials used.

4.5.2.2 Installed Piping Systems

Installed piping systems may be subjected to a leak test. Before testing, the pipe and valves shall be staked if such protection from thrust motion has been determined to be required by the Engineer or Inspector. Any noticeable leaks shall be stopped and defective materials shall be replaced. Valves shall be operated during the test period.

4.5.3 Operational Testing

Prior to final acceptance by the SEJPA, all construction water facilities using recycled water shall be required to successfully pass an operational test as administered by the Engineer or Inspector.

The leak test for installed piping systems in conjunction with a leak test of all storage tank installations shall constitute the operational test.

Any required corrections shall be noted in the form of a punch list and submitted to the Customer by the Inspector for correction by the Contractor. Service start-up shall not be authorized until all corrections are made to the satisfaction the SEJPA.

4.6 Identification

4.6.1 On-site Irrigation Systems

4.6.1.1 Posting Approved Use Area

Posting the use of recycled water shall be required at the public entrance of the use area and any field office or maintenance building established by the Customer. Posting shall not be required at other locations within the approved use area, except as required by the Regulatory Agencies on a case-by-case basis. If the use area is physically broken into more than one segment, it shall not be required that the Customer post each of the various operating segments. The required posting shall consist of at least one sign bearing the words "DO NOT DRINK -RECYCLED WATER USED FOR IRRIGATION" in English and Spanish, with white letters at least two inches high on a purple pantone background. The sign shall be so placed that it can be readily seen by all Operations Personnel utilizing the facilities. Each sign shall display an international warning symbol "DO NOT DRINK."

4.6.1.2 Pipe Identification

All recycled water irrigation piping under constant water pressure shall be identified and marked in the following manner:

PVC - PVC below grade irrigation piping under constant water pressure shall be either labeled with purple pantone stenciling which shall appear on both sides of the pipe with the marking "CAUTION - NON-DRINKING WATER" or "CAUTION - RECYCLED WATER" in 5/8-inch letters repeated every 12 inches, or be of purple pantone color. A warning tape shall be placed directly on top of the pipe identifying it by the words "CAUTION - NON-DRINKING WATER" or "CAUTION - RECYCLED WATER." If materials and/or warning tape are not available, other identification methods may be approved by the Regulatory Agencies.

Recycled water lines laid above grade including adapters and fittings shall be purple pantone in color with black or white stenciling. The stenciling shall appear on both sides of the pipe with the marking "CAUTION - RECYCLED WATER" in 5/8 inch letters repeated every 3 feet.

Other Piping - All other irrigation piping under constant water pressure shall be stenciled with purple pantone paint and marked with warning tape as noted for PVC pipe.

Warning Tape - Purple pantone warning tape and location tape shall also be installed, and shall be attached to the top of the pipe with plastic tape and banded to the pipe at least once every five feet.

4.6.1.3 Valve Identification

All gate valves, manual control valves, electrical control valves, pressure-reducing valves, and pressure-relief valves installed below grade shall be housed in a valve box with a purple pantone locking cover. All such valves installed above grade shall have their handles, operators, and/or bodies painted purple pantone. Electric control valve box covers shall be stenciled with a valve identification number and shall be painted purple pantone or equipped with a purple pantone warning tag indicating use of recycled water.

4.6.1.4 Control Device Identification

Each automatic controller and its associated equipment shall be identified with a sign bearing the words "RECYCLED WATER USED FOR IRRIGATION" in English and Spanish, with white letters at least one inch high on a purple pantone background. The sign shall be so placed that it can be readily seen by any Operations Personnel utilizing the equipment.

4.6.2 Construction Water Facilities

4.6.2.1 Posting Approved Use Area

Posting the use of recycled water shall be required and shall be accomplished at the main entrance to the site or at the on-site field office or maintenance building. The required posting shall consist of at least one sign bearing the words "DO NOT DRINK - RECYCLED WATER USED FOR CONSTRUCTION" in English and Spanish, with white letters two inches high on a purple pantone background. The sign shall be so placed that it can be readily seen by all Operations Personnel utilizing the facilities. Each sign shall display an international warning symbol "DO NOT DRINK."

4.6.2.2 Pipe Identification

All rigid pipe shall be identified as being used for recycled water service. For pipe laid on the surface of the ground, each and every joint shall be banded around the entire outer circumference in at least one location, with purple pantone marker tape at least two inches wide. The banding shall be located so that the identification is as conspicuous as possible. For pipe that is buried or partially buried, purple pantone marker tape at least two inches wide shall be placed on the top of the pipe and along the entire length of all joints.

All flexible conduit or hoses shall be identified as being used for nondomestic water service. Each and every adapter or fitting shall be painted purple pantone.

4.6.2.3 Valve Identification

All valves shall be installed above grade and shall have their handles, operators, and/or bodies painted purple pantone.

4.6.2.4 Storage Tank Identification

Each and every storage tank shall be identified by a painted label as using recycled water. The label shall contain the words "DO NOT DRINK - RECYCLED WATER" in English and Spanish, with white letters two inches high on a purple pantone background. In addition, at least one sign shall be posted on the fence surrounding each storage tank. The label and sign shall be so placed that they can be readily seen by all operations Personnel utilizing the facilities. Each label or sign shall display an international warning symbol "DO NOT DRINK."

4.6.2.5 Vehicle Identification

Each and every distribution vehicle shall be identified by painted labels or signs as using recycled water. The label shall contain the words "DO NOT DRINK - RECYCLED WATER USED FOR CONSTRUCTION" in English and Spanish, with white letters two inches high on a purple pantone background. One label shall be placed on the driver's side of the vehicle on the tank at a spot close to the cab. One label or sign shall be placed on the rear surface of the tank. The labels or signs shall be so placed that they can be readily seen by all Operations Personnel utilizing the vehicles. Each label or sign shall display an international warning symbol "DO NOT DRINK."

Section 5

Procedures for Administration

5.1 Obtaining Service

The service area for the San Elijo Water Reclamation System includes but is not limited to the City of Encinitas, Solana Beach, Del Mar and a small portion of San Diego. The SEJPA will deliver recycled water to the San Dieguito Water District, Santa Fe Irrigation District, [Olivenhain Municipal Water District](#), and the City of Del Mar. The Districts/City will in turn sell recycled water to their customers. The SEJPA will deliver recycled water to customers including, but not limited to Caltrans, who are outside the areas of the agencies contracted by the SEJPA and have received approval for direct service from the SEJPA from the appropriate water purveyor. Future customers will apply to the appropriate agency contracted with the SEJPA and will be regulated by the Rules and Regulations developed by the specific agency except the 22nd Agricultural District, who will be regulated by the Regulations developed by the SEJPA. In the event an applicant is outside the area of the agencies contracted by the SEJPA, but within the SEJPA service area, the SEJPA will determine the feasibility of recycled water service. Interactions between the SEJPA and the Customer, or representatives, are indicated in the sections of these Regulations concerning the design and construction phases of a recycled water service or system. Additional interactions are required for the administration of a recycled water service.

5.1.1 Application Submittal

An application for recycled water service shall be submitted to the SEJPA only after the SEJPA has accepted the feasibility of the proposed service. Approval for service shall be indicated by the SEJPA issuing a User Permit to the Applicant. The User Permit shall come into force only after construction of the subject project has been completed, final acceptance has been granted by the SEJPA, and approval for service start-up has been given by the Regulatory Agencies.

The application for recycled water service shall be made in writing and signed by the Applicant, who may be the Owner or authorized representative. The application form shall be furnished by the SEJPA and shall request information concerning the Applicant's company, the Applicant's relationship to the subject property as legal owner, tenant, or lessee, the type of recycled water use, a bounds description of the property to be served, the purpose for which the property is to be used, the total area to be served per this application, and any special conditions for service pursuant to these Regulations. Certain technical information, derived from the design and peculiar to the type of recycled water use, may also be requested. A sample of the application form is included in Appendix A as Exhibit 1. Blank application forms are available at the SEJPA office.

A service exhibit shall accompany the application form. This exhibit shall be a scaled drawing delineating the subject service area, identifying the location and size of all service connections, delineating any areas in which recycled water service is to be specifically excluded, and showing the nearest major arterial highway(s).

5.1.2 SEJPA Evaluation

Upon receipt of an application, the General Manager or designated representative shall review the application and perform investigation of service options, as necessary. The SEJPA may prescribe specific requirements in writing to the Applicant as to the design of the facilities, the manner of construction, the method of operation, and the conditions of service. [The SEJPA may also provide guidance or prescribe requirements regarding nutrient concentrations within the recycled water, typical vegetation nutrient demands, and how fertilizer application rates should be adjusted to meet estimated nutrient demands of irrigated vegetation.](#) An evaluation shall be performed which will establish that all information obtained on the form is consistent with these Regulations and the applicable requirements of the Regulatory agencies. Upon successful completion of its evaluation, the SEJPA shall submit the application form and the required exhibit to the Regional Board for its approval. Concurrently, the SEJPA shall submit copies of the application form and the required exhibit to the State Department of Health Services and San Diego County Department of Environmental Health for their review.

5.1.3 Authority Determination

The SEJPA reserves the right to determine the size of the recycled water service line, the service connection, the meter, and any and all other appurtenances to the service. The recycled water service line shall be installed to a curb line or property line of the approved use area, abutting upon a public street, highway, alley, easement, lane or road (other than a freeway) in which the recycled water distribution main is installed.

5.1.4 Issuing of User Permit (Service Agreement)

A User Permit issued by the SEJPA to the Applicant shall constitute a legally binding service agreement between the two parties. In its administration, a User Permit hereby incorporates these Regulations and any additional requirements prescribed by the SEJPA or by the Regulatory Agencies, or both, to ensure continued operation of the recycled water system and to protect the public health. A User Permit shall be issued only upon approval by the Regional Board.

5.1.5 Establishing Service Connection

Following the Regulatory Agencies approval of on-site facility design or layout, and prior to on-site facility installation, the Customer or Recycled Water Site Supervisor shall request the SEJPA install the service connection. The SEJPA shall make the installation, including all required appurtenances, within 30 working days from receipt of the request, or shall make arrangements for the Customer to install the service connection under the SEJPA 's inspection and approval.

Prior to approval for the use of recycled water at a use site, any testing must be done with potable water, usually high lined from an available fire hydrant. Recycled water cannot be used on an unapproved use site.

The request for service connection shall be accompanied by all requisite fees for installation and connection as indicated in the current rate and fee schedule and as appropriate for the size and type of service.

5.1.6 Certification Submittal

Once the Customer has selected the Recycled Water Site Supervisor of the on-site recycled water system, the certification of recycled water service must be initiated. The operation certification by the Recycled Water Site Supervisor shall be submitted to the SEJPA as part of the request for service start-up. The SEJPA shall evaluate this submittal and advise the Recycled Water Site Supervisor of the need for any additional information or action.

Following receipt of operation certification and after granting final inspection approval of the on-site facilities, the SEJPA or Regulatory Agencies shall complete design and construction certification. The completed recycled water service certification shall be processed with the Customer's request for service start-up by the SEJPA through the Regional Board. A sample of the certification form is included in Appendix A as Exhibit 2. Blank certification forms are available at the SEJPA office.

If the Customer selects a new Recycled Water Site Supervisor during the course of service, a new operation certification form shall be submitted by the new Recycled Water Site Supervisor to the SEJPA. The SEJPA shall then process this form through the Regional Board.

5.1.7 Service Start-up

Following final inspection of the project by Regulatory Agencies and the SEJPA, the Customer shall request regular service start-up. Upon receipt of such request, the SEJPA shall apprise the Regional Board of the intent to begin service. This appraisal shall include the submitting of the completed recycled water service certification and shall be made within ten (10) working days from receipt of the request. The Regional Board shall indicate its approval of service start-up on the certification form. Upon authorization by the Regional Board and the SEJPA shall begin regular service within fourteen (14) working days of receipt of authorization.

To provide regular service start-up, the SEJPA shall first remove any jumper that may have been employed for interim service during installation and testing of the on-site facilities. The SEJPA shall then set the meter, which is purchased by the Customer, and complete the start-up installation.

5.1.8 Confirmation of Service Start-up

Within 10 working days of service start-up, the SEJPA shall confirm such start-up to the Regulatory Agencies.

5.2 Conditions of Service

The SEJPA reserves the right to revoke a User Permit if all or any of the service conditions contained herein are not satisfied at all times.

5.2.1 Regulatory Conditions

Service to a Customer may be terminated at any time the quality of the recycled water does not comply with the requirements of Regulatory Agencies or at any time the Customer's operations do not conform to these Regulations.

5.2.2 Operational Conditions

The SEJPA shall not be liable for any damage by water or otherwise resulting from defective plumbing, broken or faulty service or non-domestic water mains constructed by the Customer or his representative.

5.2.2.1 Service Pressure

The Customer shall insure that a reasonable service pressure is available to serve his facilities. If the available service pressure is too high, the Customer shall provide a pressure-reducing valve downstream of the meter to obtain a reasonable working pressure. If the available service pressure is too low, the Customer shall provide booster pumping to correct the deficiency.

5.2.2.2 Service Scheduling

In order to maintain acceptable working conditions throughout the recycled water distribution system, SEJPA may schedule the use of recycled water. Such scheduling may involve programming deliveries to different Customers and/or to various portions of a single Customer's system. Any scheduling shall take into account applicable constraints of Regulatory Agencies, the requirements of these Regulations, and the operating constraints of affected Customers.

5.2.2.3 Relation of Property to Service

The SEJPA and Regulatory Agencies shall not use a service connection to supply adjoining property of different Owners, or to supply property of the same Owner across a street or alley, without approval. When property provided with a service connection is subdivided, such service connection shall be considered as belonging to the lot or parcel of land that it directly enters.

5.2.2.4 Metering

All recycled water used on any premises where a meter is installed shall pass through the meter. Customers shall be held responsible and charged for all water passing through their meters.

5.2.2.5 Other Conditions

Conditions relating to meter reading and test, turn-offs, and turn-ons shall be the same as established for the domestic (potable) water system.

5.3 System Supervision

The SEJPA shall receive in the certification of recycled water service from the Customer/Owner the following information regarding the individual designated as the Recycled Water Site Supervisor; his name, the address and telephone number of his location during normal working hours, and the telephone number at which he or his designated representative can receive messages during off hours. It shall be the responsibility of the Customer/Owner to notify the SEJPA of a change in the designation of the Recycled Water Site Supervisor.

The Recycled Water Site Supervisor shall be thoroughly familiar with the entire system within his responsibility and with all applicable conditions of recycled water use. He shall be the contact person between the Customer and the SEJPA concerning the operation of the system and the use of recycled water.

5.4 Reporting

As delineated in these Regulations, certain reporting or notification between the parties involved with the use of recycled water may be conducted in person or by telephone. The following reporting shall be made in writing and relates to ongoing recycled water service.

5.4.1 To the Customer

The following reporting shall be made by the SEJPA to the Customer:

- a) The quantity of recycled water consumed by the Customer during the billing period, to be submitted as part of the SEJPA's billing for recycled water service and based on the Customer's meter reading.
- b) The quality of recycled water delivered to the Customer, to be submitted only at the specific request of the Customer and based on analytical work performed by the SEJPA, a bacteriological analysis generally being performed daily and a chemical analysis generally being performed once a month.
- c) The Purveyor shall also annually report to the Customer the approximate quantity of nitrogen and phosphorus within a unit volume of recycled water for the Customer's use in estimating fertilization needs.

5.4.2 To the Regulatory Agencies

Most reporting by the SEJPA to Regulatory Agencies has to do with reclamation plant performance and quality of plant effluent and is beyond the scope of these Regulations, which deal with the distribution of the recycled water after treatment or interception. With respect to distribution of the recycled water, the SEJPA shall report the following types of information to the appropriate Regulatory Agency:

- a) Names of Customers and identification of lands that are irrigated with recycled water or application of recycled water for construction purposes.
- b) Quantities of recycled water used by each Customer.
- c) Type of use made by each Customer.
- d) Any failure of pipeline or facilities that causes water to be discharged into unauthorized areas.
- e) Any violation of the SEJPA's Regulations that causes a violation of the Regulatory Agency requirements.
- f) Change in owner, user or onsite supervisor.
- g) Alterations to any onsite facilities or topography.

5.5 Violations

5.5.1 Determination

The SEJPA reserves the right to determine whether a violation of the Regulations has resulted from any action or occurrence that is the responsibility of a Customer. Insofar as the violation of these Regulations constitutes a violation of any Regulatory Agency requirement, the SEJPA makes its determination on behalf of the concerned agency.

5.5.2 Specific Violations

Specific violations shall include those that directly cause noncompliance with any one of the specific prohibitions as listed in these Regulations: runoff conditions, ponding conditions, windblown spray conditions, unapproved uses, disposal in unapproved areas, cross connections, unprotected drinking fountains, unprotected public facilities, hose bibs, and fire hydrants. However, by definition, noncompliance with any condition or conditions of these Regulations, whether willfully or by accident, shall constitute a violation.

5.5.3 Corrective Action

If the Recycled Water Site Supervisor's investigation results in the determination that a violation has occurred, then he shall immediately notify the SEJPA and Regulatory

Agencies. It shall be the responsibility of the Recycled Water Site Supervisor to initiate action that will correct the conditions having caused the violation. If, in the opinion of the (Recycled Water Site Supervisor), the violation constitutes an immediate danger to the public health, the service shall be terminated immediately by shutting off the meter and locking it. Service shall be resumed only after the violation has been corrected to the satisfaction of the Regulatory Agencies.

If the violation is determined to be of lesser degree, then a timetable for completing the corrections shall be negotiated between the Recycled Water Site Supervisor and the SEJPA and Regulatory Agencies. Corrections not being made in accordance with the timetable shall also result in the termination of service by shutting off the meter and locking it.

Regardless of the extent of the violation, the Customer shall incur a service start-up fee for the resumption of a service that has been locked off.

5.5.4 Appeal

If the Customer feels that he has just cause, he may appeal the determination of the SEJPA. Such appeal must be presented in writing to the General Manager in accordance with the SEJPA's appeal procedure. The appeal shall state conditions that the SEJPA has determined to be a violation and the Customer's opinion to the contrary. The General Manager will bring the appeal before the SEJPA Board of Directors for their consideration. The action of the Board of Directors shall be final.

5.6 Suspending and/or Terminating Service

5.6.1 Determination

Suspension and/or termination of recycled service may be authorized by the SEJPA for reasons as described in Subsection 2.23 of these Rules and Regulations. The decision of the SEJPA or his designee to suspend and/or terminate recycled water service shall be final. With regard to Subsections 2.23(1) and (2), the SEJPA may, at its discretion, immediately suspend service until any appeal is determined.

5.6.2 Notification

Where the SEJPA or his designee determines that service be terminated per Subsections 2.23 the SEJPA shall provide written notice to the Customer at least 15 days prior to the date of proposed termination of services, except as provided in Section 2.23.1 or 2.23.2. Notification will set forth provisions of the Rules and Regulations, which the Customer has failed to adhere, or the reasons why the public health, safety or welfare requires the termination and the factual basis for this determination.

5.6.3 Appeal

If the Customer feels that he has just cause, he may appeal the determination of the SEJPA staff following procedures detailed in SEJPA regulations.

5.6.4 Payment of Reconnection Costs

Where the SEJPA suspends or terminates recycled water service in accordance with Subsection 2.23(1), (2) or (5), the Customer shall thereafter pay any and all costs and fees for reconnecting and/or starting up recycled water service. Where the SEJPA suspends and/or terminates recycled water service in accordance with Subsections 2.23 (3) or (4), SEJPA shall pay all costs and fees for reconnecting and/or starting up recycled water service.

5.7 Rate and Fee Schedule

5.7.1 Recycled Water Service Rates

Recycled water service rates shall be defined as the unit charges made to a Customer for the consumption of recycled water as received by the Customer and delivered from the treatment facilities.

Rates to be charged and collected and terms, provisions, and conditions to be effective respecting such rates for recycled water service shall be established by the SEJPA.

5.7.2 Change or Rates

The SEJPA reserves the right to change recycled water rates at any time.

5.7.3 Metering

For the purpose of computing bills, each meter upon the customer's premises will be considered separately, and reading of two or more meters will not be combined as equivalent to measurement through one meter.

On Customer Request:

- a) A Customer may, giving not less than one week's notice, request the SEJPA to test the meter.
- b) The SEJPA may require Customer to deposit an amount to cover the adopted cost of the test.
- c) This deposit will be returned if the meter is found to register more than two (2) percent fast. Customer will be notified, not less than five (5) days in advance, of the time and place of the test.
- d) A written report giving the results of the test will be shown to Customer within ten (10) days after completion of the test.

5.7.4 Billing

Recycled water users served directly by the SEJPA will be invoiced by the SEJPA.

5.7.5 Time and Manner of Payment for Recycled Water Bills

Recycled water bills are due and payable upon presentation.

All meters shall be read and billed monthly.

Should any meter in service fail to register or should the SEJPA be unable to read the meter for reasons beyond the control of the SEJPA, the amount of water used shall be estimated by the SEJPA by determining the yearly average and comparing it to the same billing period for the prior year.

5.7.6 Delinquent Accounts

Recycled water bills are due and payable upon presentation and are delinquent if not paid within twenty-five (25) days from the day of mailing. If a bill becomes delinquent, the SEJPA shall send the Customer, by first-class mail, a notice that water service shall be discontinued unless the bill is paid within fifteen (15) days.

Any residential Customer can make a request for extension of payment, or arrangements for payment of charges by calling the SEJPA office. No termination of service shall be affected if the customer also keeps the account current in each subsequent billing. If it remains unpaid at the end of fifteen (15) days, service shall be discontinued. At least two working days prior to the termination of service, the SEJPA shall deliver to the property a written notice of intent to terminate service. A late payment notice charge of \$5.00 will be required at the time of the 48-hour post notice. The charge is due, along with the payment, to avoid service shut-off.

**EXHIBIT 1
SAN ELIJO JOINT POWERS AUTHORITY
APPLICATION FOR RECYCLED WATER SERVICE**

(Please Type or Print All Information)

USER ACCOUNT # _____

Type of Water Use (Check One): Construction _____ Irrigation _____

Organization Name _____

Relationship to Property _____

Responsible Individual _____ Title _____

Organization Address _____

Organization Telephone _____

Property Owner (If different than applicant) _____

Use of Parcel(s) _____

Total Area Served with Water per this Application (Irrigation Only) _____ acres

Design Peak Flow (Irrigation Only) _____ gpm

Expected Date to Commerce Recycled Water Service (Month/Year) _____

Estimated Duration of Use (Construction Only) _____ weeks

Water Purveyor _____

Additional Information _____

This application is made in accordance with the San Elijo Joint Powers Authority Recycled Water Program Rules and Regulations for Recycled Water Service. As these Rules and Regulations may be amended from time to time, the applicant hereby acknowledges and consents to the San Elijo Joint Power Authority's use at its option of recycled water in lieu of potable water for the purposes herein mentioned in accordance with the Regulations and Specifications of the San Elijo Joint Powers Authority and as may be required by the Water Code of the State of California.

Applicant's Signature _____ Date _____

Processing Information (Completed by the San Elijo Joint Powers Authority)

Please Provide Additional Information as Noted _____

Additional Information Requested on _____

Service Connection Made on _____

Health Dept. Approval Obtained on _____

Final Inspection Made on _____

San Elijo Joint Powers Authority Approval Granted on _____

Service Start-Up Made on _____

Recycled Water Site Supervisor _____

Billing Rate _____

J:\SANELIJO\WATER.REC\RULES.DM\Application.doc

EXHIBIT 2
SAN ELIJO JOINT POWERS AUTHORITY
CERTIFICATION FORM FOR RECYCLED WATER SERVICE
(Please Type or Print All Information)

USER ACCOUNT #

Type of Water Use (Check One): Construction _____ Irrigation _____

Operation Certification (Completed by Recycled Water Site Supervisor)

Operator of Recycled Water System (Company Name) _____

Relationship to Property Owner _____

Recycled Water Site Supervisor _____

Business Address _____

Business Telephone _____ Off-Hours Telephone _____

I have reviewed the "Rules and Regulations for Recycled Water Service San Elijo Joint Powers Authority" and certify that the operation of this recycled water service will be in accordance with all applicable requirements contained therein, including providing for the required training and supervision of all personnel under my control who will be involved with the use of recycled water.

Recycled Water Site Supervisor's Signature _____ Date _____

Company Title _____

Design and Construction Certification (Completed by the San Elijo Joint Power Authority)

Representative _____ Title _____

Business Address _____

Business Telephone _____ Off-Hours Telephone _____

I certify that the design and construction of the recycled water service is in accordance with all applicable requirements contained in the "Rules and Regulations for Recycled Water Service San Elijo Joint Powers Authority."

Signature _____ Date _____

Print Name _____ Title _____

Recycled Water Service Approval (Completed Regional Board)

Based on information contained within the Application Form for Recycled Water Service and within the Certification Form for Recycled Water Service, the Regional Water Quality Control Board - San Diego Region hereby approves the use of recycled water on the area(s) described therein insofar as that use of recycled water is consistent with the requirements of Order 2000-10, or its addenda.

Regional Board Approval _____ Date _____

Regional Board Title _____

J:\SANELIJO\WATER.REC\RULES.DM\certification.doc

SAN ELIJO JOINT POWERS AUTHORITY
MEMORANDUM

November 12, 2013

TO: Board of Directors
San Elijo Joint Powers Authority

FROM: General Manager

SUBJECT: ACCEPTANCE OF COMPLETION – CONSTRUCTION OF THE ADVANCED
WATER TREATMENT PROJECT FOR THE SAN ELIJO WATER
RECLAMATION FACILITY

RECOMMENDATION

It is recommended that the Board of Directors:

1. Authorize the General Manager to sign and record a Notice of Completion for the Advanced Water Treatment Project and W. M. Lyles Co.; and
2. Discuss and take other action as appropriate.

BACKGROUND

In November 2011, the San Elijo Joint Powers Authority (SEJPA) entered into an agreement with W.M. Lyles (Contractor) for the construction of the Advanced Water Treatment project using a lease-purchase contracting method. The lease-purchase method is comprised of three separate agreements; a Lease Agreement, a Sublease Agreement, and a Construction Services Agreement. The function of the Lease Agreement is to allow the SEJPA to lease an area of property to W.M. Lyles where W.M. Lyles would build the advanced water treatment facility. The sublease agreement allows W.M. Lyles the ability to sublease the property with the advanced water treatment facilities back to the SEJPA for a limited time while the project is being constructed, tested, and system startup is performed. This provides the SEJPA the right to access and use the facility that W.M. Lyles constructs. The function of the Construction Services Agreement is to specify the desired construction elements, design, and specifications as prepared by the SEJPA's engineer of record. The Construction Services Agreement also specifies that L.W. Lyles shall perform the construction in accordance to the applicable public works requirements such as prevailing wages, working hours, and safety requirements and specifies the guaranteed maximum price (GMP) that will be paid for the stated scope of work. The negotiated GMP for the Advanced Water Treatment was \$4.0 million. The negotiated GMP for the miscellaneous capital projects was \$209,868. The scope of work for all construction components is detailed in the construction services agreement for a total GMP of \$4,209,868.

DISCUSSION

Construction was awarded to W.M. Lyles Co. on November 14, 2011 for an amount of \$4,209,868. One change order was executed for the project which reduced the construction award amount by \$10,241; resulting in a total contract value of \$4,199,627. The project had an original construction schedule of 360 calendar days to reach substantial construction completion. The contractor received approximately 270 additional calendar days due to unforeseen delays agreed to by both the Contractor and the SEJPA. The project was completed on budget, with no injuries and no filed claims against the SEJPA. The work by W.M. Lyles Co. was of good quality and the contractor worked collaboratively with staff to resolve construction issues.

With the acceptance of this project by the Board of Directors and the filing of the Notice of Completion, the contract with W.M. Lyles Co. will be completed. The SEJPA Attorney will file the Notice of Completion with the County Clerk. After 35 days, the final payment will be made to the Contractor.

It is therefore recommended that the Board of Directors:

1. Authorize the General Manager to sign and record a Notice of Completion for the Advanced Water Treatment Project and W. M. Lyles Co.; and
2. Discuss and take other action as appropriate.

Respectfully submitted,



Michael T. Thornton, P.E.
General Manager